



A Metropolitan Community Church Affiliated with the Center for Progressive Christianity

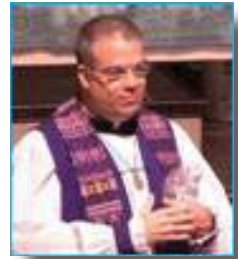
2013 Annual Report

as presented at the
Annual Congregational Meeting
held on
January 19th, 2014

Our 4th Year of Ministry

The Sunshine Cathedral is a different kind of Church where the past is the past and the future has infinite possibilities!

Senior Minister's Report ~ Jan 19th, 2014 (for 2013)



I'll get right to the good news! We ended 2013 in the Black, which is the 2nd consecutive year to do so.

2012 was historic because it was a first in anyone's memory (going back decades) to end a year in the Black. It was in the Black for the year only, though. In 2012 Sunshine Cathedral spent \$3k LESS than it brought in and aged payables were \$50k less than in 2011, balance due to restricted accounts was half what it had been in 2011, and balance sheet liabilities were down by 54% from 2011. Giving was up and old financial wounds were healing. We ended 2012 with a sense of euphoria and a determination that 2013 would end in an even stronger position...AND IT DID.

At year's end, **2013 showed a \$48k surplus (\$58k when in-kind donations are added in).**

AND, as of the first of 2014, there are **NO aged payables!!!** Some were paid off in lump sums, some were paid off over time, some were forgiven by those who were owed, but by hook or by crook, they are wiped out. No RED, at all.

Our loving members and friends being faithful with their tithes and offerings and our diligent board offering a number of fundraisers all contributed to our continued healing. Other contributing factors to our dramatically improved financial health were:

- *Salaries and benefits were under budget by \$62k* (due to attrition, temporary pay cuts, and two staffers volunteering to be furloughed)...we are slightly understaffed but have plans to correct that by summer of 2014. All current staff people have had their salaries restored to pre-cut levels (there were no raises or bonuses in 2013). No one is currently furloughed.
- *Music came in \$15k under budget.*
- *Special events brought in \$18k more than anticipated.*
- We changed our insurance plan (which offered great coverage with low deductibles and copays) for a plan with higher copays and deductibles but with *huge savings* to the church (offers same great coverage).
- Because of some generous benefactors, we were able to advertise more in 2013 than ever before.
- Because of a very generous benefactor, we were able to offer our performing arts series without any cost to the church.

Other good news is that staff are the only ones to have been negatively impacted by inconsistent summer cash-flow in 2013.

- The IRS, the Lease, and MCC were paid on time throughout the year.
- We started paying into the MCC pension fund (for the first time in many years) and we also signed up with MMBB, the American Baptist Pension Plan (funded with payroll deductions, no matching funds from the church) and the exciting thing about MMBB is that it covers lay people as well as clergy.

Our next goal is to have a very successful stewardship campaign over the next few weeks followed by a successful capital campaign meant to retire our mortgage (which will make even more ministry possible).

It was a crunchy summer, but the first and fourth quarters were remarkable and the year's ending was historic.

We dedicated 2013 as a year of prayer, and I think it paid off.

2014 is a year of Transformation...and we're already off to a great start.

I am so grateful to those who shared in the sacrifices, who always believed in the vision, who remained committed to excellence no matter what was happening, who believed things could continue to improve, who supported me when I was weary; and I am grateful to the Sunshine Cathedral Foundation with which we work so closely and harmoniously now, and to SunServe who are not merely "neighbors" or "cousins" but friends; and I am grateful to many who have become more generous or more consistent in their giving, and to some who have been outrageously generous (1 person in 2013 gave more than 10% of the church's budget, and the top three givers combined gave about 18% of our budget). Identified givers made up about 2/3 of the budget, with the rest of the budget being met by unidentified contributions and fundraisers. I am thankful to all who give what they can and do so lovingly and consistently. I pray that all who give with love are blessed abundantly.

I am also thankful to our many volunteers who make a great deal of ministry happen at no or little cost to the church.

My hope for 2014 and 2015 is that we can invest in staff instead of constantly having them take pay cuts, furloughs, and RIFS. This staff has been *faithful and generous* and has never once complained. I'm hoping in 2014 we can **reward** them with not asking them to make heroic sacrifices and by even getting them some extra help this year and next.

Area of focus for 2014: In 2012 we grew by 1% and in 2013 we grew by 2.5%. This is good, especially when coupled with the financial miracles we have experienced; but we need that growth to increase. Sunday morning attendance actually decreased slightly in 2013 but overall attendance for all combined services and events increased. We want to reach even more people in 2014 and so let's hope that our attendance can climb by 4% while our income stream continues to increase as well.

Please continue your support of our ministries and continue praying for the Sunshine Cathedral.

Six years ago our situation was bleak, even dire.

We have been working to turn it around ever since, and have made improvements every year.

We are now healthier than we've been in decades. We'll spend 2014 fortifying ourselves so that a mishap or turn of events can't threaten that health, but in this moment, let's be very glad and grateful for the miracle that has been worked through our combined efforts, optimism, and diligence.

Once again, the metrics tell our story, and the overarching message is that Sunshine Cathedral has released the past to the past and has embraced a future filled with infinite possibilities. Thank you for being part of that exciting future.

With much love,

Rev. Dr. Durrell Watkins, Senior Minister

The Purpose of the Annual Meeting

The annual meeting is a chance for us to receive a summary of the previous year's progress and/or challenges and a reminder of what the vision for the upcoming year entails. In years when there are matters to be voted on, a forum will be held before the day of the meeting so that people can ask questions and speak to issues. On the day of the vote, there is no further discussion. On years when there is no vote, the meeting is simply to share reports with those who are interested. A compilation of reports will always be available in print for those who want them who were unable to attend the meeting.

How is Information Available During the Year

1. All Cathedral board meetings are open and can be attended by every member. One must be on the agenda to speak, but the business that is handled by the board is open for everyone to witness. The board meets 10 times per year (second Tuesday of most months at 7 pm).
2. The Financial Health Team meets the first Tuesday of every month at 6:30 pm. At that meeting, the entire ministry plan is discussed line by line. All questions are welcome and are answered. The FHT is made up of staff and about half the Cathedral Board, but any Cathedral member may attend the meeting and at that meeting may ask any question about church finances.
3. All staff members are available to the congregation by phone or email. You can always ask a question. If the person you ask isn't the best person to ask, she or he will refer you to the proper authority.
4. The *SunBurst* is published weekly. That publication contains 8 to 12 pages of information every week throughout the year. It is also sent as an attachment to email subscribers.
5. Weekly and monthly financial reports are emailed by the Executive Director to the Cathedral Board and posted on the Cathedral's web site www.sunshinecathedral.org.
6. There is a frequent Q&A column in the Sun Burst. When people ask questions in writing, they are often answered in the newsletter for everyone to read (names are always withheld).
7. Announcements are made at the beginning of every worship service, and slides with information are rotated before each service.
8. Additional information can be found on our website.
9. In addition to these many ways of staying informed, there is an **Annual Meeting** every January where information is summarized and shared.

Conduct for Public Meetings

Our rules for discussion for all Sunshine Cathedral meetings, classes, and forums (based on V.I.S.I.O.N.S. model. V.I.S.I.O.N.S. is a multi-cultural, diversity training and consultation firm committed to anti-oppression work):

1. It's OK to disagree.
2. Do not blame, shame, or attack anyone
3. Practice both/and thinking (as valid as your opinion may be, it probably isn't the only valid opinion and there is probably more than one way to accomplish any worthy goal)
4. Be aware of intent and impact (our intentions are usually good, or at very least neutral, but our words and actions may impact others more negatively than we had intended)
5. "Try on" new ideas before dismissing them or reacting negatively to them
6. Practice self-focus (rather than belittling or insulting someone with a different view, we can simply own our own feelings by saying, "I feel" or "I think" or "I would prefer" rather than "you're wrong" or "what were you thinking?!" or "that's stupid." Also, we speak only for ourselves; we are never the spokespersons for unnamed, faceless "others" (the infamous "they" or "everybody" that are often invoked to persuade an ideological opponent)

By using these simple guidelines for discussion, there is no topic that we can't discuss and even when we disagree, we can do so in ways that are helpful, respectful, and that will build us up rather than tear us apart. By committing to respectful dialogue, even our disagreements can be part of a healthy process that will contribute to the vitality of our congregation.

Direct Dealing

We have a direct dealing policy at Sunshine Cathedral (and in most MCCs; in fact, at the denominational level MCC insists upon and tries to model direct dealing).

Public meetings are not the place to initially air grievances. When we have conflict or a misunderstanding with someone in church leadership, the FIRST step is to speak with that person directly. If that proves to be unsatisfactory, then the SECOND step is to speak with that person and a mediator. If that doesn't work, then speaking to someone's supervisor might be in order.

It is always appropriate to ask questions before making accusations, and one should always deal directly with a person rather than resorting to triangulation tactics (going around a person or behind the person, trying to vilify the person to others or build a coalition against the person before a direct discussion with the person has even taken place). Triangulation is considered antagonistic behavior and is unworthy of any principled organization, and especially any organization founded on a commitment to spiritual growth and vitality.

If there are questions about fiduciary concerns, the FIRST step is to ask questions of the Administrative Staff. That should almost always settle the matter as a member of the Administrative Staff is the person with the most current and complete information about all financial matters. However, if you feel that the Administrative Staff has not responded to you sufficiently, you should attend a Financial Health Team meeting (first Tuesday of every month at 7:00 pm...everyone is always welcome). At that meeting every line item is addressed and every question that is raised is answered. In the unlikely event that the first two steps didn't answer your questions satisfactorily, you can then ask to be added to the agenda for a Board of Director's meeting. Once on the agenda, you can make a statement to the board which will listen to you and will decide if further action is warranted.

Sunshine Cathedral's Direct Dealing Policy

The Sunshine Cathedral is a growing organization and conflict will occur as a result. Conflict is a fact of life in human society, including the church. Conflict that hones the edge of an organization and keeps it mindful of and true to its purposes is healthy.

Conflict can be good or bad, healthy or unhealthy, creative or destructive. All leaders are expected to handle conflict in a healthy, loving, and creative way and expect the same from the staff, membership and friends of the church.

Healthy conflict is where members and friends of the church deal with their issues up front. They talk directly to those with whom they are in disagreement. They are to bring substantive evidence with their particular viewpoint and have demands that are reasonable. They present their viewpoints as supportive of the mission of the church and are able to clearly show this in their presentation. They clearly have a deep love for the church, love and respect for the leadership of the church and are honorable in sharing their viewpoint. They do not make personal attacks on others with whom they disagree. Rather, they are concerned that they have correct information. They view themselves as working with the church leadership to find a peaceful, loving solution to the issue at hand for the good of all people concerned. Once a decision is reached on an issue, whether they were in agreement or not, they support the witness of the body and the working of Spirit in leading that appropriate group to the decision reached. They continue to be constructive and positive in their work for the common good of the church as witnessed by the body.

How is Healthy Conflict Resolved?

It is the policy of the Sunshine Cathedral, its Executive Staff and Cathedral Chapter, to directly deal with people regarding issues of the church and to teach all members, staff, and friends in proper methods of direct dealing. We will not deal with proposals or concerns where the proponents of such are not willing to identify, by name, the individuals involved. Those individuals named, as well as the person said to represent them, must be present in person or in writing before the concern or proposal will be considered. If the individuals are not willing to represent themselves or be identified, the administrative body will not consider nor address the issue.

Following Scriptural guidelines, persons who have a grievance or concern will be requested to take their concern directly to the person(s) or ministry group involved in the matter. If that person or group is unable to resolve the issue, then the parties involved may request that someone serve as a facilitator to help the people involved resolve their conflict. This meeting will require all parties present. If the conflict still cannot be resolved, the parties may request that the Executive Staff or an appointed mediator assist in seeking a resolution to the conflict.

How is Unhealthy Conflict Resolved?

Unhealthy conflict is where a member, staff or friend, on the basis of non-substantive evidence, goes out of their way to make insatiable demands, usually attacking the person or performance of others. These attacks are selfish in nature, tearing down rather than building up, and are frequently directed against those in a leadership position. Persons who enter into an unhealthy conflict are best known as antagonists.

The presence of antagonists and situations in which unhealthy conflict occurs are usually of a small number in any congregation. However, such unhealthy conflict has the potential to disrupt, even to destroy the mission and ministry of Christ through the people of God, as has been the experience of many of the churches in MCC. Antagonism is the primary reason why churches are unable to have steady, enduring growth and one of the major reasons for the loss of dynamic, enthusiastic leaders and pastors. Antagonism left unchecked in the church creates a negative, fearful, and unhappy environment. Antagonistic people drain the leadership of their time and energy and do not make being involved in the church a joyous and blessed experience.

It is the policy of the Sunshine Cathedral to be aware of antagonism in the church and to deal with antagonists in the church as soon as the Executive Staff is made aware of them. Antagonistic behavior in the church will be deemed unbecoming conduct for any member, staff or friend of the Sunshine Cathedral. Any such member, staff or friend, will be lovingly confronted with clarity as to how their behavior is unhealthy and causing disruption in the congregation and request that a change in their behavior occur. Unwillingness to change their behavior may be cause to ask an antagonist to find another church home.

Is It More Important To Be Right or To Be One in Purpose?

That's usually at the heart of the problem: When we believe we are right, and we are willing to stand for our opinion no matter what, then unity is unlikely. Cooperation, which is the working model of a group in harmony with one another, means that on occasion we will all be 'co-opted', that is, we will all have to at some time 'give in' and surrender our highly-valued opinion for the sake of unity. This principle is at the heart of 'being a team'; we can't all go our separate directions and arrive together at our goal.

Where Can You...?

Where can you find intellectually honest bible teaching from an historical-critical perspective?

Where is the bible taken seriously rather than literally?

Where can you find blended worship that integrates the best of liberal, evangelical, humanistic, and New Thought traditions?

Where can you celebrate the fullness of both your sexuality and your spirituality?

Where can you allow yourself to think and feel and question as you deepen your spiritual search?

Where are all people welcome at the Communion table regardless of their beliefs, doubts, or religious affiliation?

Where are school supplies and toys collected every year for children?

Where is literally tons of food collected each year for families in need of a hand?

Where can you take very affordable religious education courses from a progressive perspective that can lead to certificates or state approved religious degrees?

Where can you enjoy a marvelous performing arts series for a fraction of the cost of most venues?

Where can you consistently hear positive messages that affirm the sacred value of all people?

Where will you be challenged to believe in yourself, care about others, work for justice, practice generosity, and continue to grow spiritually?

Where can you find a voice speaking out for marriage equality?

Where is religion fun, spirituality relevant, and community built?

Where can literally thousands of people each month, on campus and on line, find progressive, positive, and practical spirituality?

Where can you find a senior center, 12 Step groups, The Gay Men's Chorus of South Florida, and many other service organizations sharing a home and a common purpose?

The answer to all of these questions is the same: **Sunshine Cathedral!!!**

Sunshine Cathedral is a different kind of church where the past is past and the future has infinite possibilities.

When you give time, talent, and treasure to Sunshine Cathedral you are making our unique and life-giving ministry possible. Your generosity literally facilitates miracles for countless people every year.

About Sunshine Cathedral



Our Spiritual Practice is: *Progressive, Positive, & Practical*

Our Community Prayer is: *May Peace Prevail on Earth!*

Our Affirmation is: *Sunshine Cathedral is a different kind of church where the past is past and the future has infinite possibilities.*

Our Desire is: To rescue religion from irrelevance, practice positive thinking, be justice workers, build community, value diversity, and help people experience peace, hope, and joy in their lives.

Our Message is:

- ✓ All people have sacred value.
- ✓ Divine Life “in which we live and move and have our being” is the “God of many names, mystery beyond our naming” and is an all inclusive, all good, universal Presence.
- ✓ Rooted in the Christian tradition and the Gay Rights Movement, we are an inclusive church for ALL kinds of people.

Our Commitment is:

- ✓ To welcome into membership anyone who makes a commitment to support the work of Sunshine Cathedral with time, talent, and treasure; that is, with frequent worship, volunteer service, and consistent financial generosity.
- ✓ While acknowledging that we are culturally and historically Christian, to honor truth wherever it may be found and the wisdom of every faithful spiritual tradition.
- ✓ To offer the sacrament¹ of Holy Communion (a symbolic meal² representing our unity with all life and with the Source of life) to all worshipers regardless of church membership or personal beliefs.

Our Pastoral Vision is³:

- ✓ To promote Progressive, Positive, Practical spirituality within the Sunshine Cathedral Community and beyond.
- ✓ To build a church culture of gratitude and generosity where every active member gives generously of time, talent, and treasure.
- ✓ To have 1200 weekly worshipers at our Fort Lauderdale campus by the year 2017
- ✓ To reach out to South Florida and beyond through worship, small groups (on and beyond our campus), classes, written materials, community partnerships, the Internet and other media.
- ✓ To improve the quality and accessibility of Religious Education through the Samaritan Institute so that our church can increasingly experience biblical literacy, theological sophistication, and spiritual maturity.

^[1] We define a sacrament as an outward sign of inward grace, a ritual reminding us of “that of God” within us. Though any action by this definition has the potential to be sacramental, the official sacraments of our church are Baptism and Holy Communion – both are offered unconditionally to anyone who desires them.

^[2] Unleavened bread and non-alcoholic wine or juice

^[3] A ten year vision first articulated in November 2007

We Welcome New Members in 2013!

| | |
|--------------------|-----------|
| Diane Baker | 2/3/2013 |
| Jeannine Carrier | 2/9/2013 |
| Cheryl Clayton | 2/3/2013 |
| Bary Clifton | 2/9/2013 |
| Ernie Curinga | 1/20/2013 |
| Robert Hentschel | 2/9/2013 |
| Stephanie Koy | 1/20/2013 |
| Jim Lewis | 2/3/2013 |
| Brunilda Martinez | 2/9/2013 |
| Robert McCormick | 1/6/2013 |
| Joshua L. McKinney | 2/3/2013 |
| Pamela Nascimento | 1/6/2013 |
| Peter Oberdorf | 2/9/2013 |
| Aaon Matthew Payne | 4/7/2013 |
| LuAnne Pond | 2/9/2013 |
| Ronald Richmond | 2/9/2013 |
| Miriam Rodriguez | 2/9/2013 |
| Scott Schwab | 2/9/2013 |
| Paula Talese | 2/9/2013 |

We honor those who have passed on.

| | |
|--------------|-----------|
| David Duncan | 9/4/2013 |
| Ken Nunn | 1/17/2013 |



Although, every effort is made to insure the accuracy of these lists, errors or omissions may occur and we apologize if this is the case. Please notify the Church office with corrections if necessary.

The Samaritan Institute at Sunshine Cathedral

TSI is the Religious Education program at Sunshine Cathedral and is state approved to grant religious degrees.

Very affordable courses

Evening classes

Six week terms

Certificates, Associate, Bachelor, and Master degrees

Classes can be taken simply for spiritual enrichment

A seminary educated faculty

Contact Durrell@sunshinecathedral.net for more information

Courses offered in 2014 include:

The Art of Being Yourself

Jan 20 – Feb 24

Course Fee: \$30

Instructor: Rev Dr Durrell Watkins

The Hidden Power of the Bible

Mar 17 – Apr 14

Course Fee: \$25

Instructor: Rev Dr Durrell Watkins

The Bible & Homosexuality

May 26 – June 30

Course Fee: \$30

Instructor: TBA

The Healing Christ

Sept 22 – Oct 27

Course Fee: \$30

Instructor: Rev Dr Durrell Watkins

2014 Performing Arts at the Cathedral

Saturday, January 4th
Piano Concert with
Isadora Jovanavic



Saturday, January 25th
Leslie Jordan



Saturday, February 22nd
Justin Ritchie
& Rick Jensen



Sunday, March 2nd
Lady Fancy



Saturday, March 8th
The Yale
Whiffenpoofs



Saturday, April 26th
Lorna Luft &
Scott Nevins



Visit www.sunshinecathedral.org for more information



1480 SW Ninth Avenue
Fort Lauderdale, Florida 33315
954.462.2004
www.sunshinecathedral.org

CATHEDRAL BOARD OF DIRECTORS

| | |
|---|------------|
| Mr. Deney Priddy | Chair |
| Rev. Dr. Durrell Watkins | Vice-Chair |
| Ms. Cathy Tullo | Treasurer |
| Ms. Linda Edin | Secretary |
| Ms. Amy Walker, Mr. Bill Vaccaro, Ms Barbara Sussman, Mr. Dennis McWilliams Mr. Trevor Stewart, Ms. Twila Wilson | |

THE DIACONATE

Deacon CJ Ashton
Deacon Anne Atwell
Deacon Ed Huckemeyer
Deacon Jean Johnson
Deacon Lydya Chapman
Deacon Margarita Rodriguez
Deacon Michael Karban
Deacon Vincent Bishop (Jamaica)
Deacon Larrie Brown (Jamaica)
Deacon Devon Cammock (Jamaica)



**Sunshine
Cathedral
Foundation**

| | |
|---------------------|------------|
| Keith Muller, Ph.D. | Chair |
| Paul Fasana | Vice Chair |
| Jim Pamplin | Treasurer |
| Jeff Selzer | Secretary |

Bobbye Schuler, Kewan Smith,
Rozen Patterson, Ed. D., Robert DeCamillo,
Gregory Ullman, William Bryan, Ph.D.,
Reverend Durrell Watkins, DMin



| | |
|-----------------------------------|--|
| Mark Ketcham | EXECUTIVE DIRECTOR |
| 954-764-5150 | mketcham@sunserve.org |
| Michael Norfleet | 954-764-5055 |
| NOBLE A. McARTOR ADULT DAY CENTER | |

Progressive Christianity

“Religion does not have to be irrelevant, ineffectual, or repressive.”

Progressive Christians respect non-Christian traditions, affirm the sacred value of all people, and believe the way we treat one another is more important than religious dogma.

Progressive Christians “affirm the variety and depth of human experience and the richness of each person’s search for meaning, and we encourage the use of sound scholarship...and all intellectual powers to understand the presence of God in human life.”

The principles of Progressive Christianity are:

- ~ To find the unity & sacredness of all life by following the path of Jesus
- ~ To value the teachings attributed to Jesus & also find value from other sources of wisdom
- ~ To try to build community that welcomes & values women and men, gender non-conforming persons, religious believers & spiritual doubters, people from a variety of religious traditions, people of every ethnic & racial group, LesBiGay folk as well as heterosexuals, and people from every class background
- ~ To remember that how we treat one another is the most powerful affirmation of what we really believe
- ~ To find grace in the search for meaning rather than insist on predetermined points of doctrine
- ~ To work for global peace and social justice
- ~ To be increasingly conscious of the environment
- ~ To commit to a life of learning & generosity

Spiritual Principles Taught at Sunshine Cathedral

1. God is omnipresent (“There’s not a spot where God is not”).
2. All people have sacred value.
3. Love makes a family & Mutuality makes a relationship holy.
4. Our habitual thoughts matter (“thoughts held habitually manifest eventually”; “Change your thinking & change your world”).
5. Beliefs are well-rehearsed opinions and can be changed.

The Cathedral Staff

Full-Time Staff -

Rev Dr Durrell Watkins is Sunshine Cathedral's Senior Minister
BA, Henderson State University; MA, Goddard College; MDiv, Union Theological Seminary; DMin, Episcopal Divinity School
Doctoral Thesis: "Popular Entertainment as Queer Canon"
(Ordained: MCC & Divine Science)

Rev Dr. Robert Griffin is Sunshine Cathedral's Executive Minister
MDiv, Episcopal Divinity School; DMin, Florida Center for Theological Studies
Doctoral Thesis: "Anti-Racism Work in a Queer Context"
(Licensed: Baptist; Ordained: MCC)

Rev Katy Peterson is Sunshine Cathedral's Music Minister
BA, Wesley Institute for Ministry & the Arts; MFA candidate, Goddard College
(Ordained: Interfaith & also ordained Sunshine Cathedral music minister)

Kurt Litzenberger is Sunshine Cathedral's Facilities Manager
BS, Roberts Wesleyan College

Part-Time Staff -

Rev Kevin Tisdol is Sunshine Cathedral's Minister of Administration
BS, Manhattan College; seminarian, Episcopal Divinity School
(Ordained: Interfaith)

Rev Ed Johnson is the Minister of Technology for Sunshine Cathedral.
BA, University of Texas; AAS, Central Texas College
(Ordained: Humanist)

Rev Dr BK Hipsher is Sunshine Cathedral's Virtual Church Chaplain
BS, California Coast University; MATS, Episcopal Divinity School; DMin, ibid.
Doctoral Thesis: "Through the Looking Glass: Identity, Community, & Sacrament in Virtual Reality"
(Ordained: MCC)

Minister Anne Atwell is Sunshine Cathedral's Minister of Connections
BS, Florida Atlantic University; MDiv, St. Thomas University
(Ordination candidate: MCC)

Juan Andres Morales is Sunshine Cathedral's Coordinator of Spanish ministries
Juan is an activist, artist, teacher, and an alumnus of Florida International University

Ron Lawler, videographer

Lewis Nicholson, interim facilities assistant

Artists-in-Residence: Barbara Ramcharitar, MA (Organist), Isidora Jovanovic, MM, MA (Pianist), Sara McMillan, BA (Vocalist), Elena Correia, MM (Vocalist), Teresa Flores, MM (Percussionist), Paul Phillips (Bass/Guitar)

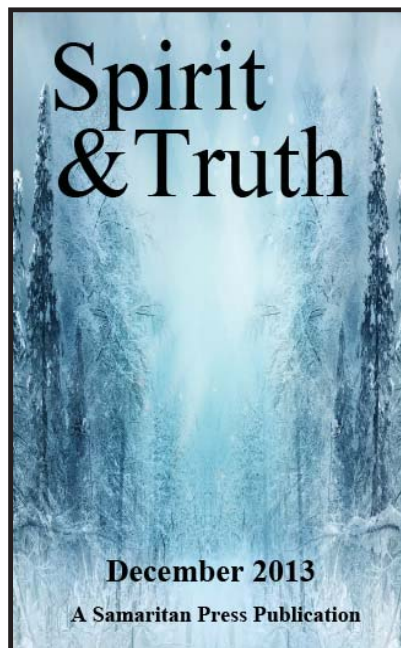
Volunteer Staff -

Rev Walt Weiss is Sunshine Cathedral's Minister for Pastoral Care & a Hospice Chaplain
BBA, University of Hawaii; BS, Rutgers University; MDiv, Florida Center for Theological Studies. (Ordination: MCC)

Deacon Margarita Rodriguez is Sunshine Cathedral's Minister of Spiritual Companionship (Spiritual Director)
BA, King's College; graduate studies, Florida Center for Theological Studies; Spiritual Companion Certificate, St. Thomas University

Deacons: Michael Karban, BA, MTS (Chancel Associate), Lydya Chapman, AARS (Asst Chancel Asso), Ed Huckemeyer, MS, MA, MRS (Ministry to Seniors), Jean Johnson, AARS (Ministry to Seniors), CJ Ashton (Sacristan)

In 2014 join us in praying daily using Sunshine Cathedral's monthly magazine, *Spirit & Truth*.



Attendance Comparison 2012/2013

| Attendance 2012 | | Attendance 2013 | | Trend | % |
|--------------------------|---------------|----------------------------|---------------|--------------|--------------|
| | YTD | | YTD | | |
| Service 1 | 8,023 | Service 1 | 7,242 | (781) | -9.73% |
| Service 2 | 14,451 | Service 2 | 13,625 | (826) | -5.72% |
| Service 3 | 609 | Service 3 | 365 | (244) | -40.07% |
| Online Sermons | 61,157 | Online Sermons | 64,384 | 3,227 | 5.28% |
| Online Sermons Spanish | - | Online Sermons Spanish | 222 | 222 | 100.00% |
| Midweek Prayer | 813 | Midweek Prayer | 394 | (419) | -51.54% |
| Christmas Eve 1 | 415 | Christmas Eve 1 | 533 | 118 | 0.00% |
| Christmas Eve 2 | 235 | Christmas Eve 2 | 295 | 60 | 0.00% |
| Christmas Eve 3 | 307 | Christmas Eve 3 | - | (307) | 0.00% |
| Christmas Concert | 320 | Christmas Concert | 320 | 0 | 0.00% |
| Thanksgiving | 55 | Thanksgiving | 91 | 36 | 0.00% |
| Good Friday | 240 | Good Friday | 190 | (50) | -20.83% |
| Ash Wednesday | 87 | Ash Wednesday | 105 | 18 | 20.69% |
| Other Offering | 202 | Other Offering | 202 | 0 | 0.00% |
| Giving W/Ease | 598 | Giving W/Ease | 407 | (191) | -31.94% |
| EasyTithe | 434 | EasyTithe | 490 | 56 | 12.90% |
| 7/11 Show | - | 7/11 show | 152 | 152 | 100.00% |
| AIDS Day Movie | 30 | AIDS Day Movie | 26 | (4) | 100.00% |
| AOG Orgran Concert | - | AOG Organ Concert | 120 | 120 | 0.00% |
| Best of the Cathedral | 62 | Best of the Cathedral | - | (62) | 0.00% |
| Claustrophobia | 135 | Claustrophobia | - | (135) | 100.00% |
| Covenant class | - | Covenant Class | 75 | 75 | 100.00% |
| Cruise | - | Cruise | 75 | 75 | 100.00% |
| Dr Sofya | 55 | Dr Sofya | - | (55) | 0.00% |
| GMC Anniversary Show | 185 | GMC Anniversary Show | - | (185) | 0.00% |
| Highpoint Treatment | 533 | Highpoint Treatment center | 1,061 | 528 | 99.06% |
| Jamaica | 795 | Jamaica | 780 | (15) | -1.89% |
| JET | 90 | JET | - | (90) | -100.00% |
| Kind of a drag | 280 | Kind of a drag | - | (280) | -100.00% |
| Labrynth Walk | 17 | Labrynth Walk | 15 | (2) | -11.76% |
| Lady Fancy | 187 | Lady Fancy | 130 | (57) | -30.48% |
| Lectionary Discussion | 1,002 | Lectionary Discussions | 798 | (204) | -20.36% |
| Lent Living the Question | - | Lent Living the Question | 16 | 16 | 100.00% |
| Lent Reflection Webinar | - | Lent Reflection Webinar | 351 | 351 | 100.00% |
| Lenten Dinner | 80 | Lenten Dinner | 46 | (34) | -42.50% |
| Liberation Concert | - | Liberation Concert | 225 | 225 | 100.00% |
| Marian's Ordination | - | Marian's Ordination | 175 | 175 | 100.00% |
| Matt Alber | 105 | Matt Alber | 100 | (5) | -4.76% |
| Membership Class | - | Membership Class | 12 | 12 | 100.00% |
| Miami Outreach | 12 | Miami Outreach | 13 | 1 | 100.00% |
| Movie Night | - | Movie Night | 17 | 17 | 100.00% |
| Nite of the Living Dead | - | Nite of the Living Dead | 143 | 143 | 100.00% |
| Orchestra Concert | 170 | Orchestra Concert | 125 | (45) | 0.00% |
| Piano/Organ Concert | - | Piano/Organ Concert | 94 | 94 | 100.00% |
| Picnic | - | Picnic | 525 | 525 | 100.00% |
| Prayer Vigil | - | Prayer Vigil | 212 | 212 | 100.00% |
| Presidential Place | 445 | Presidential Place | 488 | 43 | 9.66% |
| Prison Ministry | 249 | Prison Ministry | - | (249) | -100.00% |
| Redeeming Scripture | 75 | Redeeming Scripture | - | (75) | 100.00% |
| Samaritan Institute | 316 | Samaritan Institute | 302 | (14) | -4.43% |
| Saving Jesus | 61 | Saving Jesus | - | (61) | -100.00% |
| Second life | 502 | Second life | 589 | 87 | 17.33% |
| Spaghetti Dinner | 55 | Spaghetti Dinner | 100 | 45 | 100.00% |
| Steve Grand | - | Steve Grand | 276 | 276 | 100.00% |
| Tom Goss | - | Tom Goss | 57 | 57 | 100.00% |
| True Love 101 | - | True Love 101 | 13 | 13 | 100.00% |
| Usher/Greeter retreat | 55 | Usher/Greeter Retreat | 19 | (36) | 100.00% |
| Vaudville Show | 142 | Vaudville Show | - | (142) | -100.00% |
| Volunteer Reception | 55 | Volunteer Reception | 103 | 48 | 100.00% |
| Wedding Reception | - | Wedding Reception | 22 | 22 | 100.00% |
| Weiss Ordination | 101 | Weiss Ordination | - | (101) | 0.00% |
| Womens Gathering | 67 | Womens Gathering | 14 | (53) | -79.10% |
| Total | 93,807 | Total | 96,134 | 2,327 | 2.48% |

Sunshine Cathedral

Balance Sheet

December 31, 2013

| | | |
|---|--------------------------------|--|
| ASSETS | | |
| Current Assets | | |
| Checking/Savings | | |
| 1010 · Operating Cash | 477.62 | |
| 1020 · Restricted Cash | 3,312.19 | |
| 1060 · Payroll Account | - | |
| 1061 · Clearing Account | 13,000.00 | |
| Total Checking/Savings | <u>16,789.81</u> | |
| Total Current Assets | <u>16,789.81</u> | |
| TOTAL ASSETS | <u><u>16,789.81</u></u> | |
| LIABILITIES & EQUITY | | |
| Liabilities | | |
| Current Liabilities | | |
| Accounts Payable | | |
| 2010 · Accounts payable | <u>(14.68)</u> | |
| Total Accounts Payable | <u>(14.68)</u> | |
| Other Current Liabilities | | |
| 2200 · Balance Due to Restricted | <u>-</u> | |
| Total Other Current Liabilities | <u>-</u> | |
| Total Current Liabilities | <u>-</u> | |
| Total Liabilities | <u>(14.68)</u> | |
| Equity | | |
| 3100 · Temporarily Restricted Funds | 1,645.50 | |
| 3200 · Permanently Restricted Funds | | |
| 3286 · Center for Excellence | - | |
| 3293 · ARCUS | <u>-</u> | |
| Total 3200 · Permanently Restricted Funds | <u>-</u> | |
| 3010 · Unrestrict (retained earnings) | (33,267.64) | |
| Net Income | 48,426.63 | |
| Total Equity | <u>15,158.99</u> | |
| TOTAL LIABILITIES & EQUITY | <u><u>16,789.81</u></u> | |



*All reports are unaudited and reflect activity for the calendar year 2013.

2:08 PM

01/11/14

Accrual Basis

Sunshine Cathedral
Profit & Loss Budget vs. Actual
 January through December 2013

| | Jan - Dec 13 | Budget | \$ Over Budget | % of Budget |
|---------------------------------------|-------------------|-------------------|-------------------|---------------|
| Ordinary Income/Expense | | | | |
| Income | | | | |
| 4000 - Generosity | | | | |
| 4010 - Identified Offerings | 392,950.92 | 462,800.00 | -69,849.08 | 84.9% |
| 4015 - Unidentified Offerings | 44,208.00 | 68,000.00 | -23,792.00 | 65.0% |
| 4071 - Building Fund | 2,961.47 | 1,200.00 | 1,761.47 | 246.8% |
| 4073 - Global Outreach | 6,364.00 | 4,200.00 | 2,164.00 | 151.5% |
| 4076 - Benevolence | 415.00 | | | |
| 4077 - Music | 230.00 | 600.00 | -370.00 | 38.3% |
| 5120 - Thanksgiving Harvest | 99.00 | | | |
| Total 4000 - Generosity | <u>447,228.39</u> | <u>536,800.00</u> | <u>-89,571.61</u> | <u>83.3%</u> |
| 5000 - Earned Income | | | | |
| 4075 - Remembrance Candle Donation | 500.00 | 1,800.00 | -1,300.00 | 27.8% |
| 4111 - Spirit and Truth | 4,152.00 | 3,600.00 | 552.00 | 115.3% |
| 5010 - Facilities Usage Rental | 54,907.03 | 42,000.00 | 12,907.03 | 130.7% |
| 5015 - Holy Unions / Weddings | 690.00 | 600.00 | 90.00 | 115.0% |
| 5016 - Memorials / Funerals | 2,320.00 | | | |
| 5030 - Sunburst Advertising | 2,450.00 | 6,000.00 | -3,550.00 | 40.8% |
| 5040 - Samaritan Institute | 90.00 | | | |
| 5115 - Fundraising | | | | |
| 5092 - Yard Sale | 0.00 | 3,000.00 | -3,000.00 | 0.0% |
| 5823 - Spaghetti Dinner | 1,244.00 | | | |
| 5881 - Kind of a Drag | 1,907.00 | 9,000.00 | -7,093.00 | 21.2% |
| 5903 - Special Fundraiser | 60.00 | 2,800.00 | -2,740.00 | 2.1% |
| 5905 - Thanksgiving Offering | 16,308.00 | 15,000.00 | 1,308.00 | 108.7% |
| 5906 - 50/50 | 709.00 | | | |
| 5920 - Xmas Ornaments | 980.00 | 5,000.00 | -4,020.00 | 19.6% |
| 5922 - Picnic 50/50 | 881.43 | | | |
| Total 5115 - Fundraising | <u>22,089.43</u> | <u>34,800.00</u> | <u>-12,710.57</u> | <u>63.5%</u> |
| 5727 - Proceeds from Cafe Press | 37.38 | | | |
| Total 5000 - Earned Income | <u>87,235.84</u> | <u>88,800.00</u> | <u>-1,564.16</u> | <u>98.2%</u> |
| 5800 - Special Events | | | | |
| 5810 - Easter Income | 2,399.21 | 5,000.00 | -2,600.79 | 48.0% |
| 5820 - Christmas Eve | 10,112.19 | 10,000.00 | 112.19 | 101.1% |
| 5909 - Summer Serenade | 405.00 | | | |
| 5912 - Lady Fancy Fundraiser | 1,113.53 | | | |
| 5913 - 2012 Concert Series | 0.00 | 10,000.00 | -10,000.00 | 0.0% |
| 5918 - Michael Battle | 549.36 | | | |
| 5919 - Cruise 2013 | 4,780.00 | | | |
| 5923 - Eleven O'clock Numbers at 7 | 1,267.37 | | | |
| 5924 - Con Brio | -155.30 | | | |
| 5925 - Matt Alber | 952.50 | | | |
| 5926 - Summer Appeal | 6,300.00 | | | |
| 5927 - Piano Organ Concert | 477.00 | | | |
| 5928 - James Dale Reception | 850.00 | | | |
| 5929 - Liberation Concert | 1,231.00 | | | |
| 5930 - True Love 101 | 100.00 | | | |
| 5931 - Steve Grand Concert | 9,332.91 | | | |
| 5932 - Night of the Living Dead | 642.00 | | | |
| 5933 - Tom Goss | 385.00 | | | |
| 5934 - AOG Organ Concert | 545.00 | | | |
| 5935 - Leslie Jordan | 2,430.00 | | | |
| Total 5800 - Special Events | <u>43,716.77</u> | <u>25,000.00</u> | <u>18,716.77</u> | <u>174.9%</u> |
| Total Income | <u>578,181.00</u> | <u>650,600.00</u> | <u>-72,419.00</u> | <u>88.9%</u> |
| Expense | | | | |
| 6000 - Celebration | | | | |
| 6010 - Worship | | | | |
| 6011 - Service Supplies | 454.99 | 1,200.00 | -745.01 | 37.9% |
| 6012 - Honoraria | 2,000.00 | 1,600.00 | 400.00 | 125.0% |
| Total 6010 - Worship | <u>2,454.99</u> | <u>2,800.00</u> | <u>-345.01</u> | <u>87.7%</u> |
| 6020 - Music and Arts | | | | |
| 6021 - Musicians | 60,851.14 | 63,600.00 | -2,748.86 | 95.7% |
| 6022 - Music | 0.00 | 2,400.00 | -2,400.00 | 0.0% |
| 6023 - Musical Instrument Maintenance | 385.00 | 854.39 | -469.39 | 45.1% |
| 6024 - Subscriptions | 348.00 | | | |
| 6025 - Licensing | 0.00 | 894.00 | -894.00 | 0.0% |
| 6031 - Lessons and Scholarships | 0.00 | 3,003.96 | -3,003.96 | 0.0% |
| 6032 - Conferences and Meetings | 95.00 | 1,500.00 | -1,405.00 | 6.3% |
| 6033 - Honorarium | 0.00 | 5,000.00 | -5,000.00 | 0.0% |
| Total 6020 - Music and Arts | <u>61,679.14</u> | <u>77,252.35</u> | <u>-15,573.21</u> | <u>79.8%</u> |
| Total 6000 - Celebration | <u>64,134.13</u> | <u>80,052.35</u> | <u>-15,918.22</u> | <u>80.1%</u> |
| 6500 - Congregational Life | | | | |
| 6550 - Welcome Ministry | | | | |
| 6552 - Hospitality | 1,268.77 | 1,140.00 | 128.77 | 111.3% |
| Total 6550 - Welcome Ministry | <u>1,268.77</u> | <u>1,140.00</u> | <u>128.77</u> | <u>111.3%</u> |
| 6560 - Children's Sunday School | 4.35 | | | |

Sunshine Cathedral
Profit & Loss Budget vs. Actual
 January through December 2013

| | Jan - Dec 13 | Budget | \$ Over Budget | % of Budget |
|--|--------------|------------|----------------|-------------|
| 6580 · Volunteer Appreciation | | | | |
| 6581 · Meetings and functions | 0.00 | 1,200.00 | -1,200.00 | 0.0% |
| Total 6580 · Volunteer Appreciation | 0.00 | 1,200.00 | -1,200.00 | 0.0% |
| 7070 · Global Outreach | | | | |
| 7073 · Local Community | 5,471.88 | 1,600.00 | 3,871.88 | 342.0% |
| 7074 · Second Life | 6,600.00 | 6,600.00 | 0.00 | 100.0% |
| 7076 · Dominican Republic | 2,324.00 | | | |
| 7078 · Emerging Ministries | 1,050.00 | | | |
| 7070 · Global Outreach - Other | 1,519.00 | | | |
| Total 7070 · Global Outreach | 16,964.88 | 8,200.00 | 8,764.88 | 206.9% |
| 7080 · Benevolence | | | | |
| 7081 · Services Provided | 70.00 | | | |
| Total 7080 · Benevolence | 70.00 | | | |
| 7090 · Young Adult Outreach | | | | |
| 7091 · Services Provided | 0.00 | 600.00 | -600.00 | 0.0% |
| Total 7090 · Young Adult Outreach | 0.00 | 600.00 | -600.00 | 0.0% |
| 7100 · Suncast | | | | |
| 7101 · Supplies | 0.00 | 420.00 | -420.00 | 0.0% |
| 7102 · Equipment maintenance | 0.00 | 9,360.00 | -9,360.00 | 0.0% |
| Total 7100 · Suncast | 0.00 | 9,780.00 | -9,780.00 | 0.0% |
| Total 6500 · Congregational Life | 18,308.00 | 20,920.00 | -2,612.00 | 87.5% |
| 7200 · Salaries & related expenses | | | | |
| 7201 · Salaries | 259,626.65 | 300,000.00 | -40,373.35 | 86.5% |
| 7240 · Employee Benefits | 38,330.23 | 60,000.00 | -21,669.77 | 63.9% |
| 7250 · Payroll taxes | 18,843.08 | 18,000.00 | 843.08 | 104.7% |
| 7260 · Automobile | | | | |
| 7261 · Allowance | 21,404.24 | 22,000.00 | -595.84 | 97.3% |
| 7262 · Insurance | 0.00 | 600.00 | -600.00 | 0.0% |
| Total 7260 · Automobile | 21,404.24 | 22,600.00 | -1,195.84 | 94.7% |
| 7285 · Foundation Salary | -559.22 | | | |
| 7510 · Insurance | 808.01 | | | |
| Total 7200 · Salaries & related expenses | 338,452.99 | 400,600.00 | -62,147.09 | 84.5% |
| 8100 · Non-personnel expenses | | | | |
| 8105 · Advertising | 330.00 | 5,000.00 | -4,670.00 | 6.6% |
| 8110 · Supplies | 570.41 | | | |
| 8130 · Telephone & telecommunications | | | | |
| 8131 · Telephone - Office | 5,255.26 | 7,200.00 | -1,944.74 | 73.0% |
| 8133 · Internet | 3,365.56 | 2,400.00 | 965.56 | 140.2% |
| Total 8130 · Telephone & telecommunications | 8,620.82 | 9,600.00 | -979.18 | 89.8% |
| 8140 · Postage, shipping, delivery | 2,337.61 | 2,400.00 | -62.39 | 97.4% |
| 8160 · Equip rental & maintenance | 2,320.72 | 2,000.00 | 320.72 | 116.0% |
| 8170 · Printing & copying | 7,497.70 | 12,000.00 | -4,502.30 | 62.5% |
| 8180 · Books, subscriptions, reference | 1,286.47 | 349.00 | 937.47 | 368.6% |
| 8100 · Non-personnel expenses - Other | 0.00 | | | |
| Total 8100 · Non-personnel expenses | 22,963.73 | 31,349.00 | -8,385.27 | 73.3% |
| 8200 · Facilities | | | | |
| 8205 · Lease | 19,359.00 | 27,560.00 | -8,201.00 | 70.2% |
| 8220 · Utilities | | | | |
| 8221 · Electricity | 26,155.07 | 36,000.00 | -9,844.93 | 72.7% |
| 8332 · Water | 4,937.87 | 3,600.00 | 1,337.87 | 137.2% |
| Total 8220 · Utilities | 31,092.94 | 39,600.00 | -8,507.06 | 78.5% |
| 8240 · Repair and Maintenance | | | | |
| 8241 · Lawn Care | 418.85 | 600.00 | -181.15 | 69.8% |
| 8242 · Pest Control | 1,328.00 | 1,992.00 | -664.00 | 66.7% |
| 8243 · Air Conditioning | 0.00 | 1,800.00 | -1,800.00 | 0.0% |
| 8244 · Trash removal | 5,414.18 | 3,840.00 | 1,574.18 | 141.0% |
| 8247 · Janitorial Supplies | 910.48 | 2,400.00 | -1,489.52 | 37.9% |
| 8248 · Supplies | 451.50 | 300.00 | 151.50 | 150.5% |
| 8249 · Day Care Repair and Maintenance | 7,828.44 | 6,500.00 | 1,328.44 | 120.4% |
| 8255 · Fire Prevention | 514.45 | 770.00 | -255.55 | 66.8% |
| Total 8240 · Repair and Maintenance | 16,865.90 | 18,202.00 | -1,336.10 | 92.7% |
| Total 8200 · Facilities | 67,317.84 | 85,362.00 | -18,044.16 | 78.9% |
| 8300 · Travel & meetings expenses | | | | |
| 8310 · Travel | 1,896.80 | 4,547.57 | -2,650.77 | 41.7% |
| 8320 · Conference, convention, meeting | 56.00 | 1,600.00 | -1,544.00 | 3.5% |
| 8330 · Hospitality | 0.00 | 1,800.00 | -1,800.00 | 0.0% |
| Total 8300 · Travel & meetings expenses | 1,952.80 | 7,947.57 | -5,994.77 | 24.6% |
| 8600 · Business expenses | | | | |
| 8605 · Legal and Banking Fees | 7,239.41 | 7,800.00 | -560.59 | 92.8% |
| 8660 · Fines, penalties, judgements | -1.46 | 70.00 | -71.46 | -2.1% |
| 8670 · Organizational (corp) expenses | 61.25 | | | |
| 8671 · Returned Items | 144.00 | | | |
| Total 8600 · Business expenses | 7,443.20 | 7,870.00 | -426.80 | 94.6% |

2:08 PM

01/11/14

Accrual Basis

**Sunshine Cathedral
Profit & Loss Budget vs. Actual
January through December 2013**

| | Jan - Dec 13 | Budget | \$ Over Budget | % of Budget |
|---|-------------------------|--------------------|-------------------------|----------------------|
| 8800 - Cooperation | | | | |
| 8801 - Assessments to UFMCC | 7,906.68 | 15,924.00 | -8,017.32 | 49.7% |
| 8802 - Pension | 375.00 | | | |
| 8803 - Conference Fee | 200.00 | 575.00 | -375.00 | 34.8% |
| 8804 - Clergy Fees | 700.00 | | | |
| Total 8800 - Cooperation | <u>9,181.68</u> | <u>16,499.00</u> | <u>-7,317.32</u> | <u>55.6%</u> |
| Total Expense | <u>529,754.37</u> | <u>650,600.00</u> | <u>-120,845.63</u> | <u>81.4%</u> |
| Net Ordinary Income | 48,426.63 | 0.00 | 48,426.63 | 100.0% |
| Other Income/Expense | | | | |
| Other Income | | | | |
| 4500 - In-Kind Donations (noncash) | | | | |
| 4501 - Office Supplies | 568.11 | | | |
| 4502 - Special Events | 874.33 | | | |
| 4503 - Printing / Paper | 1,505.37 | | | |
| 4504 - Second Life | 4,400.00 | | | |
| 4505 - Service Supplies | 558.23 | | | |
| 4506 - Fixed Asset | 782.71 | | | |
| 4507 - Travel | 1,519.15 | | | |
| 4508 - Postage | 254.75 | | | |
| 4509 - Subscriptions | 132.70 | | | |
| 4511 - Sun Cast | 91.40 | | | |
| 4512 - Hospitality | 29.88 | | | |
| 4513 - Volunteer Recognition | 267.95 | | | |
| Total 4500 - In-Kind Donations (noncash) | <u>10,984.58</u> | | | |
| Total Other Income | 10,984.58 | | | |
| Other Expense | | | | |
| 9800 - Fixed asset purchases | | | | |
| 9830 - Capital purchases - equipment | 598.00 | | | |
| Total 9800 - Fixed asset purchases | <u>598.00</u> | | | |
| Total Other Expense | 598.00 | | | |
| Net Other Income | 10,386.58 | | | |
| Net Income | <u><u>58,813.21</u></u> | <u><u>0.00</u></u> | <u><u>58,813.21</u></u> | <u><u>100.0%</u></u> |

Sunshine Cathedral Giving Level Profile 2013

Note: The following are identified donors who gave to the Sunshine Cathedral during 2013.

| Giving Level | Number of Donors | Total Given | Group Average | Per Capita Per Week |
|-----------------------|------------------|-------------|---------------|---------------------|
| Over \$10,000 | 3 | 88,113.00 | 29,371.00 | 564.83 |
| \$7,500 to \$10,000 | 0 | | | |
| \$5,000 to \$7500 | 11 | 67,302.74 | 6,118.43 | 117.66 |
| \$2,500 to \$5,000 | 34 | 118,132.67 | 3,474.49 | 66.82 |
| \$1,000 to \$2,500 | 81 | 122,698.81 | 1,514.80 | 29.13 |
| \$500 to \$1,000 | 66 | 45,911.00 | 695.62 | 13.38 |
| \$250 to \$500 | 73 | 25,919.35 | 355.06 | 6.83 |
| \$100 to \$250 | 103 | 14,824.52 | 143.93 | 2.77 |
| Under \$100 | 239 | 7,307.50 | 30.58 | 0.59 |
| Totals/Average | 610 | 402,096.59 | 659.17 | 12.68 |

Note: The above per capita per week giving is based upon the average giving of identified donors and reflects only their contributions to the regular offerings of the church.

1:09 PM

01/04/14

Accrual Basis

Sunshine Cathedral Profit & Loss Prev Year Comparison January through December 2013

| | Jan - Dec 13 | Jan - Dec 12 | \$ Change | % Change |
|--|-------------------|-------------------|-------------------|----------------|
| Ordinary Income/Expense | | | | |
| Income | | | | |
| 4000 · Generosity | | | | |
| 4010 · Identified Offerings | 392,950.92 | 397,260.69 | -4,309.77 | -1.1% |
| 4015 · Unidentified Offerings | 44,208.00 | 52,681.00 | -8,473.00 | -16.1% |
| 4071 · Building Fund | 2,961.47 | 4,007.00 | -1,045.53 | -26.1% |
| 4073 · Global Outreach | 6,364.00 | 8,748.00 | -2,384.00 | -27.3% |
| 4074 · Young Adult Outreach | 0.00 | 420.00 | -420.00 | -100.0% |
| 4076 · Benevolence | 415.00 | 35.00 | 380.00 | 1,085.7% |
| 4077 · Music | 230.00 | 2,898.07 | -2,668.07 | -92.1% |
| 5120 · Thanksgiving Harvest | 99.00 | 0.00 | 99.00 | 100.0% |
| Total 4000 · Generosity | 447,228.39 | 466,049.76 | -18,821.37 | -4.0% |
| 5000 · Earned Income | | | | |
| 4075 · Remembrance Candle Donation | 500.00 | 810.00 | -310.00 | -38.3% |
| 4111 · Spirit and Truth | 4,152.00 | 4,220.00 | -68.00 | -1.6% |
| 5010 · Facilities Usage Rental | 54,907.03 | 46,465.00 | 8,442.03 | 18.2% |
| 5015 · Holy Unions / Weddings | 690.00 | 100.00 | 590.00 | 590.0% |
| 5016 · Memorials / Funerals | 2,320.00 | 1,170.00 | 1,150.00 | 98.3% |
| 5030 · Sunburst Advertising | 2,450.00 | 1,675.00 | 775.00 | 46.3% |
| 5040 · Samaritan Institute | 90.00 | 0.00 | 90.00 | 100.0% |
| 5115 · Fundraising | | | | |
| 5092 · Yard Sale | 0.00 | 320.00 | -320.00 | -100.0% |
| 5823 · Spaghetti Dinner | 1,244.00 | 0.00 | 1,244.00 | 100.0% |
| 5881 · Kind of a Drag | 1,907.00 | 7,054.65 | -5,147.65 | -73.0% |
| 5903 · Special Fundraiser | 60.00 | 590.70 | -530.70 | -89.8% |
| 5905 · Thanksgiving Offering | 16,308.00 | 14,083.00 | 2,225.00 | 15.8% |
| 5906 · 50/50 | 709.00 | 538.50 | 170.50 | 31.7% |
| 5910 · Casino Night | 0.00 | 1,079.00 | -1,079.00 | -100.0% |
| 5920 · Xmas Ornaments | 980.00 | 385.00 | 595.00 | 154.6% |
| 5921 · International Food Festival | 0.00 | 110.00 | -110.00 | -100.0% |
| 5922 · Picnic 50/50 | 881.43 | 133.00 | 748.43 | 562.7% |
| Total 5115 · Fundraising | 22,089.43 | 24,293.85 | -2,204.42 | -9.1% |
| 5424 · Proceeds from Amazon.com | 0.00 | 12.71 | -12.71 | -100.0% |
| 5725 · Proceeds from Good Search | 0.00 | 14.83 | -14.83 | -100.0% |
| 5727 · Proceeds from Cafe Press | 37.38 | 220.89 | -183.51 | -83.1% |
| Total 5000 · Earned Income | 87,235.84 | 78,982.28 | 8,253.56 | 10.5% |
| 5800 · Special Events | | | | |
| 2913 · Redeeming Scripture 2012 | 0.00 | 46.05 | -46.05 | -100.0% |
| 5810 · Easter Income | 2,399.21 | 0.00 | 2,399.21 | 100.0% |
| 5820 · Christmas Eve | 10,112.19 | 6,338.84 | 3,773.35 | 59.5% |
| 5880 · Fat Tuesday Dinner | 0.00 | -134.54 | 134.54 | 100.0% |
| 5909 · Summer Serenade | 405.00 | 533.50 | -128.50 | -24.1% |
| 5911 · Claustrophobia Saved My Life | 0.00 | -124.79 | 124.79 | 100.0% |
| 5912 · Lady Fancy Fundraiser | 1,113.53 | 3,390.00 | -2,276.47 | -67.2% |
| 5913 · 2012 Concert Series | 0.00 | -495.60 | 495.60 | 100.0% |
| 5914 · Vaudville Show | 0.00 | 1,082.00 | -1,082.00 | -100.0% |
| 5915 · Anniversary Concert | 0.00 | 1,400.00 | -1,400.00 | -100.0% |
| 5916 · Anniversary | 0.00 | 7,246.77 | -7,246.77 | -100.0% |
| 5917 · Lip Stchick | 0.00 | 277.50 | -277.50 | -100.0% |
| 5918 · Michael Battle | 549.36 | 454.14 | 95.22 | 21.0% |
| 5919 · Cruise 2013 | 4,780.00 | 0.00 | 4,780.00 | 100.0% |
| 5923 · Eleven O'clock Numbers at 7 | 1,267.37 | 0.00 | 1,267.37 | 100.0% |
| 5924 · Con Brio | -155.30 | 0.00 | -155.30 | -100.0% |
| 5925 · Matt Alber | 952.50 | 0.00 | 952.50 | 100.0% |
| 5926 · Summer Appeal | 6,300.00 | 0.00 | 6,300.00 | 100.0% |
| 5927 · Piano Organ Concert | 477.00 | 0.00 | 477.00 | 100.0% |
| 5928 · James Dale Reception | 850.00 | 0.00 | 850.00 | 100.0% |
| 5929 · Liberation Concert | 1,231.00 | 0.00 | 1,231.00 | 100.0% |
| 5930 · True Love 101 | 100.00 | 0.00 | 100.00 | 100.0% |
| 5931 · Steve Grand Concert | 9,332.91 | 0.00 | 9,332.91 | 100.0% |
| 5932 · Night of the Living Dead | 642.00 | 0.00 | 642.00 | 100.0% |
| 5933 · Tom Goss | 385.00 | 0.00 | 385.00 | 100.0% |
| 5934 · AOG Organ Concert | 545.00 | 0.00 | 545.00 | 100.0% |
| 5935 · Leslie Jordan | 2,430.00 | 0.00 | 2,430.00 | 100.0% |
| Total 5800 · Special Events | 43,716.77 | 20,013.87 | 23,702.90 | 118.4% |
| Total Income | 578,181.00 | 565,045.91 | 13,135.09 | 2.3% |
| Expense | | | | |
| 6000 · Celebration | | | | |
| 6010 · Worship | | | | |
| 6011 · Service Supplies | 454.99 | 673.66 | -218.67 | -32.5% |
| 6012 · Honoraria | 2,000.00 | 2,150.00 | -150.00 | -7.0% |
| Total 6010 · Worship | 2,454.99 | 2,823.66 | -368.67 | -13.1% |
| 6020 · Music and Arts | | | | |
| 6021 · Musicians | 60,851.14 | 55,806.69 | 5,044.45 | 9.0% |
| 6022 · Music | 0.00 | 435.28 | -435.28 | -100.0% |
| 6023 · Musical Instrument Maintenance | 385.00 | 1,286.00 | -901.00 | -70.1% |
| 6024 · Subscriptions | 348.00 | 319.00 | 29.00 | 9.1% |
| 6032 · Conferences and Meetings | 95.00 | 1,628.46 | -1,533.46 | -94.2% |
| Total 6020 · Music and Arts | 61,679.14 | 59,475.43 | 2,203.71 | 3.7% |
| Total 6000 · Celebration | 64,134.13 | 62,299.09 | 1,835.04 | 3.0% |
| 6500 · Congregational Life | | | | |
| 6550 · Welcome Ministry | | | | |
| 6552 · Hospitality | 1,268.77 | 1,073.86 | 194.91 | 18.2% |
| Total 6550 · Welcome Ministry | 1,268.77 | 1,073.86 | 194.91 | 18.2% |
| 6560 · Children's Sunday School | 4.35 | 0.00 | 4.35 | 100.0% |
| 6580 · Volunteer Appreciation | | | | |
| 6581 · Meetings and functions | 0.00 | 413.36 | -413.36 | -100.0% |
| Total 6580 · Volunteer Appreciation | 0.00 | 413.36 | -413.36 | -100.0% |
| 7070 · Global Outreach | | | | |
| 7073 · Local Community | 5,471.88 | 1,166.66 | 4,305.22 | 369.0% |
| 7074 · Second Life | 6,600.00 | 6,600.00 | 0.00 | 0.0% |
| 7076 · Dominican Republic | 2,324.00 | 4,445.00 | -2,121.00 | -47.7% |
| 7077 · MCC Global Justice Institute | 0.00 | 433.33 | -433.33 | -100.0% |
| 7078 · Emerging Ministries | 1,050.00 | 0.00 | 1,050.00 | 100.0% |
| 7070 · Global Outreach - Other | 1,519.00 | 0.00 | 1,519.00 | 100.0% |
| Total 7070 · Global Outreach | 16,964.88 | 12,644.99 | 4,319.89 | 34.2% |
| 7080 · Benevolence | | | | |
| 7081 · Services Provided | 70.00 | 106.67 | -36.67 | -34.4% |
| Total 7080 · Benevolence | 70.00 | 106.67 | -36.67 | -34.4% |
| Total 6500 · Congregational Life | 18,308.00 | 14,238.88 | 4,069.12 | 28.6% |

Sunshine Cathedral
Profit & Loss Prev Year Comparison
January through December 2013

| | Jan - Dec 13 | Jan - Dec 12 | \$ Change | % Change |
|--|--------------|--------------|------------|----------|
| 7200 · Salaries & related expenses | | | | |
| 7201 · Salaries | 259,626.65 | 278,526.77 | -18,900.12 | -6.8% |
| 7240 · Employee Benefits | 38,330.23 | 51,260.48 | -12,930.25 | -25.2% |
| 7250 · Payroll taxes | 18,843.08 | 15,974.69 | 2,868.39 | 18.0% |
| 7260 · Automobile | | | | |
| 7261 · Allowance | 21,404.24 | 22,250.58 | -846.34 | -3.8% |
| Total 7260 · Automobile | 21,404.24 | 22,250.58 | -846.34 | -3.8% |
| 7285 · Foundation Salary | -559.22 | 0.00 | -559.22 | -100.0% |
| 7510 · Insurance | 808.01 | 808.01 | 0.00 | 100.0% |
| Total 7200 · Salaries & related expenses | 338,452.99 | 368,012.52 | -29,559.53 | -8.0% |
| 8100 · Non-personnel expenses | | | | |
| 8105 · Advertising | 330.00 | 278.00 | 52.00 | 18.7% |
| 8110 · Supplies | 570.41 | 593.17 | -22.76 | -3.8% |
| 8130 · Telephone & telecommunications | | | | |
| 8131 · Telephone - Office | 5,255.26 | 4,624.51 | 630.75 | 13.6% |
| 8133 · Internet | 3,365.56 | 3,759.08 | -393.52 | -10.5% |
| Total 8130 · Telephone & telecommunications | 8,620.82 | 8,383.59 | 237.23 | 2.8% |
| 8140 · Postage, shipping, delivery | 2,337.61 | 2,273.65 | 63.96 | 2.8% |
| 8160 · Equip rental & maintenance | 2,320.72 | 900.96 | 1,419.76 | 157.6% |
| 8170 · Printing & copying | 7,497.70 | 8,715.46 | -1,217.76 | -14.0% |
| 8180 · Books, subscriptions, reference | 1,286.47 | 732.25 | 554.22 | 75.7% |
| 8100 · Non-personnel expenses - Other | 0.00 | 0.00 | 0.00 | 0.0% |
| Total 8100 · Non-personnel expenses | 22,963.73 | 21,877.08 | 1,086.65 | 5.0% |
| 8200 · Facilities | | | | |
| 8205 · Lease | 19,359.00 | 24,004.00 | -4,645.00 | -19.4% |
| 8220 · Utilities | | | | |
| 8221 · Electricity | 26,155.07 | 25,874.14 | 280.93 | 1.1% |
| 8332 · Water | 4,937.87 | 5,783.39 | -845.52 | -14.6% |
| Total 8220 · Utilities | 31,092.94 | 31,657.53 | -564.59 | -1.8% |
| 8240 · Repair and Maintenance | | | | |
| 8241 · Lawn Care | 418.85 | 256.87 | 161.98 | 63.1% |
| 8242 · Pest Control | 1,328.00 | 664.00 | 664.00 | 100.0% |
| 8244 · Trash removal | 5,414.18 | 3,533.48 | 1,880.70 | 53.2% |
| 8247 · Janitorial Supplies | 910.48 | 1,118.71 | -208.23 | -18.6% |
| 8248 · Supplies | 451.50 | 1,585.06 | -1,133.56 | -71.5% |
| 8249 · Day Care Repair and Maintenance | 7,828.44 | 4,102.00 | 3,726.44 | 90.8% |
| 8255 · Fire Prevention | 514.45 | 180.00 | 334.45 | 185.8% |
| 8256 · Plumbing | 0.00 | 540.22 | -540.22 | -100.0% |
| 8258 · Renovation | 0.00 | 152.70 | -152.70 | -100.0% |
| Total 8240 · Repair and Maintenance | 16,865.90 | 12,133.04 | 4,732.86 | 39.0% |
| Total 8200 · Facilities | 67,317.84 | 67,794.57 | -476.73 | -0.7% |
| 8300 · Travel & meetings expenses | | | | |
| 8310 · Travel | 1,896.80 | 5,188.26 | -3,291.46 | -63.4% |
| 8320 · Conference, convention, meeting | 56.00 | 0.00 | 56.00 | 100.0% |
| Total 8300 · Travel & meetings expenses | 1,952.80 | 5,188.26 | -3,235.46 | -62.4% |
| 8600 · Business expenses | | | | |
| 8605 · Legal and Banking Fees | 7,239.41 | 9,057.90 | -1,818.49 | -20.1% |
| 8660 · Fines, penalties, judgements | -1.46 | 110.00 | -111.46 | -101.3% |
| 8670 · Organizational (corp) expenses | 61.25 | 0.00 | 61.25 | 100.0% |
| 8671 · Returned Items | 144.00 | 501.75 | -357.75 | -71.3% |
| Total 8600 · Business expenses | 7,443.20 | 9,669.65 | -2,226.45 | -23.0% |
| 8800 · Cooperation | | | | |
| 8801 · Assessments to UFMCC | 7,906.68 | 12,067.22 | -4,160.54 | -34.5% |
| 8802 · Pension | 375.00 | 0.00 | 375.00 | 100.0% |
| 8803 · Conference Fee | 200.00 | 0.00 | 200.00 | 100.0% |
| 8804 · Clergy Fees | 700.00 | 175.00 | 525.00 | 300.0% |
| Total 8800 · Cooperation | 9,181.68 | 12,242.22 | -3,060.54 | -25.0% |
| Total Expense | 529,754.37 | 561,322.27 | -31,567.90 | -5.6% |
| Net Ordinary Income | 48,426.63 | 3,723.64 | 44,702.99 | 1,200.5% |
| Other Income/Expense | | | | |
| Other Income | | | | |
| 4500 · In-Kind Donations (noncash) | | | | |
| 4501 · Office Supplies | 568.11 | 0.00 | 568.11 | 100.0% |
| 4502 · Special Events | 874.33 | 0.00 | 874.33 | 100.0% |
| 4503 · Printing / Paper | 1,505.37 | 0.00 | 1,505.37 | 100.0% |
| 4504 · Second Life | 4,400.00 | 0.00 | 4,400.00 | 100.0% |
| 4505 · Service Supplies | 558.23 | 0.00 | 558.23 | 100.0% |
| 4506 · Fixed Asset | 782.71 | 0.00 | 782.71 | 100.0% |
| 4507 · Travel | 1,519.15 | 0.00 | 1,519.15 | 100.0% |
| 4508 · Postage | 254.75 | 0.00 | 254.75 | 100.0% |
| 4509 · Subscriptions | 132.70 | 0.00 | 132.70 | 100.0% |
| 4511 · Sun Cast | 91.40 | 0.00 | 91.40 | 100.0% |
| 4512 · Hospitality | 29.88 | 0.00 | 29.88 | 100.0% |
| 4513 · Volunteer Recognition | 267.95 | 0.00 | 267.95 | 100.0% |
| Total 4500 · In-Kind Donations (noncash) | 10,984.58 | 0.00 | 10,984.58 | 100.0% |
| Total Other Income | 10,984.58 | 0.00 | 10,984.58 | 100.0% |
| Other Expense | | | | |
| 9800 · Fixed asset purchases | | | | |
| 9830 · Capital purchases - equipment | 598.00 | 749.61 | -151.61 | -20.2% |
| Total 9800 · Fixed asset purchases | 598.00 | 749.61 | -151.61 | -20.2% |
| Total Other Expense | 598.00 | 749.61 | -151.61 | -20.2% |
| Net Other Income | 10,386.58 | -749.61 | 11,136.19 | 1,485.6% |
| Net Income | 58,813.21 | 2,974.03 | 55,839.18 | 1,877.6% |

12:20 PM

01/01/14

Sunshine Cathedral
A/P Aging Summary
 As of December 31, 2013

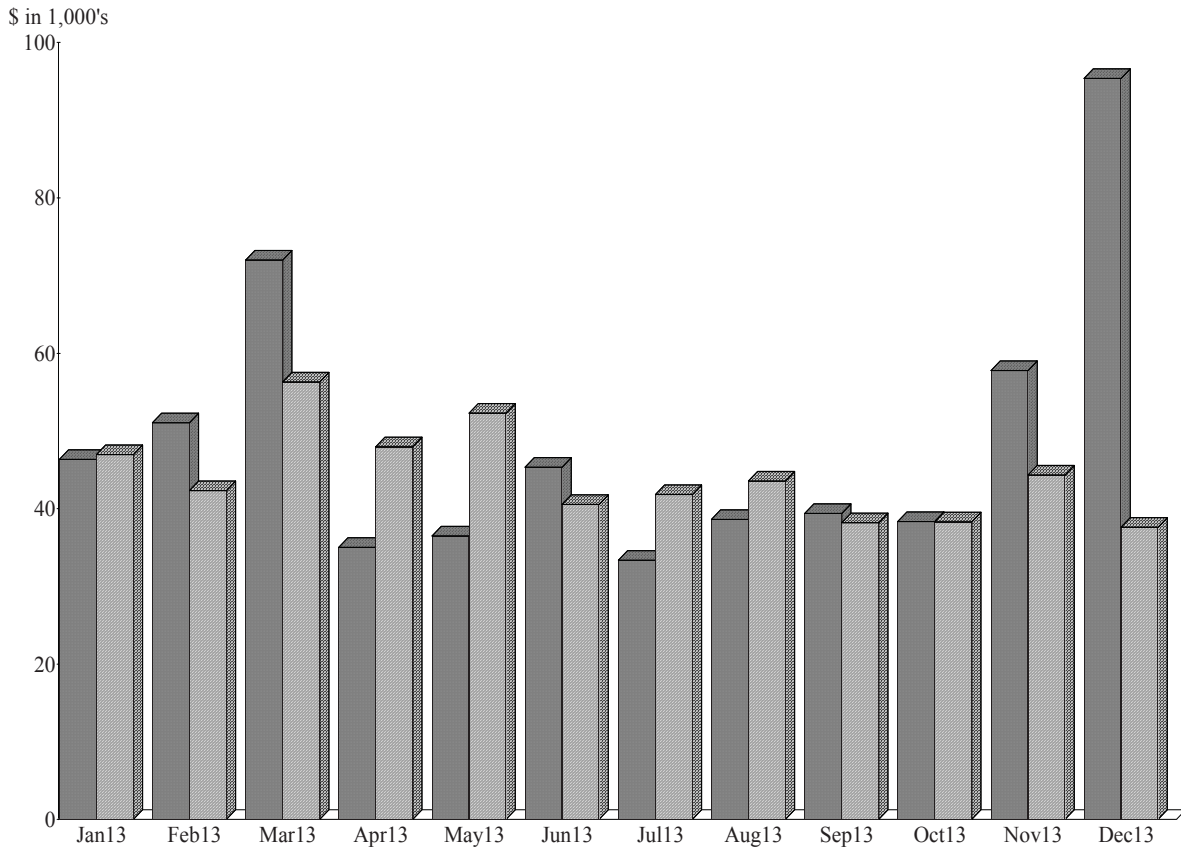
| | <u>Current</u> | <u>1 - 30</u> | <u>31 - 60</u> | <u>61 - 90</u> | <u>> 90</u> | <u>TOTAL</u> |
|--------------|----------------|---------------|----------------|----------------|----------------|---------------|
| FPL | 0.00 | -14.68 | 0.00 | 0.00 | 0.00 | -14.68 |
| TOTAL | 0.00 | -14.68 | 0.00 | 0.00 | 0.00 | -14.68 |

| Christmas 2013 | | | | |
|-----------------------|----------------------------|------------------|------------------|-------------------|
| as of 1/1/2014 11:38 | | Budget | Actual | Variance |
| <i>Income</i> | | | | |
| | Hosts | - | | - |
| | Angels | 12,000.00 | 12,925.00 | 925.00 |
| | Concert Offering | 1,800.00 | 1,917.00 | 117.00 |
| | Offering | 9,000.00 | 7,442.00 | (1,558.00) |
| | | 22,800.00 | 22,284.00 | (516.00) |
| <i>Expenses</i> | | | | |
| | Print Advertising | 150.00 | 115.00 | (35.00) |
| | Music | 175.00 | 118.00 | (57.00) |
| | Musicians | 3,000.00 | 2,934.00 | (66.00) |
| | Décor | 800.00 | 328.00 | (472.00) |
| | Service Supplies | 100.00 | - | (100.00) |
| | Hospitality | 100.00 | 100.00 | - |
| | Staff Bonus | 1,000.00 | | (1,000.00) |
| | Printing | 675.00 | 1,044.81 | 369.81 |
| | | 6,000.00 | 4,639.81 | (1,360.19) |
| | <i>Profit</i> | 16,800.00 | 17,644.19 | 844.19 |
| | <i>Assessment to UFMCC</i> | (270.00) | (223.26) | |
| | <i>Our Abundance</i> | 16,530.00 | 17,420.93 | 890.93 |

| Easter 2013 | | | |
|------------------------|-----------------|------------------------|-----------------|
| Income | Budget | Actual/Forecast | Variance |
| Honorarial/Memorial | 8,000.00 | 7,725.00 | (275.00) |
| Good Friday Offering | 1,300.00 | 1,110.00 | (190.00) |
| <i>total</i> | 9,300.00 | 8,835.00 | (465.00) |
| Worship Expense | | | |
| Decorations/Flowers | 250.00 | 199.50 | 50.50 |
| Palms | 125.00 | 77.94 | 47.06 |
| Labrynth | 285.00 | 247.09 | 37.91 |
| Hospitality | 200.00 | 200.00 | - |
| <i>total</i> | 860.00 | 724.53 | 135.47 |
| Music Expenses | | | |
| Musicians | 1,950.00 | 2,700.00 | (750.00) |
| Music | 1,000.00 | - | 1,000.00 |
| Misc | - | 588.10 | (588.10) |
| <i>total</i> | 2,950.00 | 3,288.10 | (338.10) |
| Printing | | | |
| Advertising | 1,170.00 | 1,117.15 | 52.85 |
| Bulletin | 800.00 | 420.00 | 380.00 |
| Envelopes | | 84.00 | (84.00) |
| <i>total</i> | 1,970.00 | 1,621.15 | 348.85 |
| Total Expenses | 5,780.00 | 5,633.78 | 146.22 |
| Net Income | 3,520.00 | 3,201.22 | (318.78) |

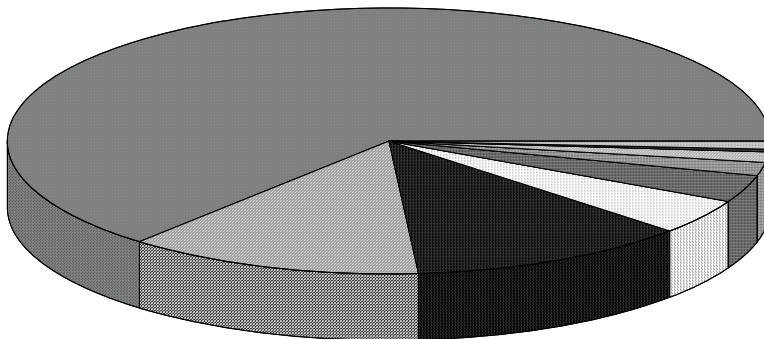
Income and Expense by Month
January through December 2013

Income
Expense



Expense Summary
January through December 2013

| | |
|-------------------------------------|---------------------|
| *7200 · Salaries & related expenses | 63.82% |
| *8200 · Facilities | 12.69 |
| *6000 · Celebration | 12.09 |
| *8100 · Non-personnel expenses | 4.33 |
| *6500 · Congregational Life | 3.45 |
| *8800 · Cooperation | 1.73 |
| *8600 · Business expenses | 1.40 |
| *8300 · Travel & meetings expenses | 0.37 |
| *9800 · Fixed asset purchases | 0.11 |
| Total | \$530,352.37 |



Sunshine Cathedral
2014 Ministry Plan

| | 4-s 5-p | 4-s 4-p | 5-s 4-p | 4-s 5-p | 4-s 4-p | 5-s 4-p | 4-s 5-p | 4-s 4-p | 5-s 4-p | 4-s 5-p | 4-s 4-p | 5-s 4-p | 4-s 5-p | 4-s 4-p | 5-s 4-p | 4-s 5-p | 4-s 4-p | TOTAL | |
|---------------------------------------|------------------|------------------|------------------|------------------|------------------|------------------|------------------|------------------|------------------|------------------|------------------|------------------|-------------------|------------------|------------------|------------------|------------------|-------------------|--|
| | Jan | Feb | Mar | Apr | May | Jun | Jul | Aug | Sep | Oct | Nov | Dec | Jan - Dec | Jan - Dec | Jan - Dec | Jan - Dec | Jan - Dec | Jan - Dec | |
| Ordinary Income/Expense | | | | | | | | | | | | | | | | | | | |
| Income | | | | | | | | | | | | | | | | | | | |
| 4000 - Generosity | | | | | | | | | | | | | | | | | | | |
| 4010 - Identified Offerings | 37,416.64 | 37,416.64 | 40,866.64 | 37,416.64 | 37,416.64 | 40,866.64 | 37,416.64 | 40,866.64 | 37,416.64 | 37,416.64 | 40,866.64 | 37,416.64 | 37,416.64 | 40,866.64 | 37,416.64 | 40,866.64 | 37,416.64 | 462,799.68 | |
| 4015 - Unidentified Offerings | 5,500.00 | 5,500.00 | 6,000.00 | 5,500.00 | 5,500.00 | 6,000.00 | 5,500.00 | 6,000.00 | 5,500.00 | 5,500.00 | 6,000.00 | 5,500.00 | 5,500.00 | 6,000.00 | 5,500.00 | 6,000.00 | 5,500.00 | 68,000.00 | |
| 4071 - Building Fund | 100.00 | 100.00 | 100.00 | 100.00 | 100.00 | 100.00 | 100.00 | 100.00 | 100.00 | 100.00 | 100.00 | 100.00 | 100.00 | 100.00 | 100.00 | 100.00 | 100.00 | 1,200.00 | |
| 4073 - Global Outreach | 350.00 | 350.00 | 350.00 | 350.00 | 350.00 | 350.00 | 350.00 | 350.00 | 350.00 | 350.00 | 350.00 | 350.00 | 350.00 | 350.00 | 350.00 | 350.00 | 350.00 | 4,200.00 | |
| 4074 - Young Adult Outreach | 0.00 | 0.00 | 0.00 | 0.00 | 0.00 | 0.00 | 0.00 | 0.00 | 0.00 | 0.00 | 0.00 | 0.00 | 0.00 | 0.00 | 0.00 | 0.00 | 0.00 | 0.00 | |
| 4076 - Benevolence | 0.00 | 0.00 | 0.00 | 0.00 | 0.00 | 0.00 | 0.00 | 0.00 | 0.00 | 0.00 | 0.00 | 0.00 | 0.00 | 0.00 | 0.00 | 0.00 | 0.00 | 0.00 | |
| 4077 - Music | 50.00 | 50.00 | 50.00 | 50.00 | 50.00 | 50.00 | 50.00 | 50.00 | 50.00 | 50.00 | 50.00 | 50.00 | 50.00 | 50.00 | 50.00 | 50.00 | 50.00 | 600.00 | |
| Total 4000 - Generosity | 43,416.64 | 43,416.64 | 47,366.64 | 43,416.64 | 43,416.64 | 47,366.64 | 43,416.64 | 47,366.64 | 43,416.64 | 43,416.64 | 47,366.64 | 43,416.64 | 43,416.64 | 47,366.64 | 43,416.64 | 47,366.64 | 43,416.64 | 536,799.68 | |
| 5000 - Eamed Income | | | | | | | | | | | | | | | | | | | |
| 4075 - Remembrance Candle Donation | 150.00 | 150.00 | 150.00 | 150.00 | 150.00 | 150.00 | 150.00 | 150.00 | 150.00 | 150.00 | 150.00 | 150.00 | 150.00 | 150.00 | 150.00 | 150.00 | 150.00 | 1,800.00 | |
| 4111 - Spirit and Truth | 300.00 | 300.00 | 300.00 | 300.00 | 300.00 | 300.00 | 300.00 | 300.00 | 300.00 | 300.00 | 300.00 | 300.00 | 300.00 | 300.00 | 300.00 | 300.00 | 300.00 | 3,600.00 | |
| 5010 - Facilities Usage Rental | 4,000.00 | 4,000.00 | 4,000.00 | 4,000.00 | 4,000.00 | 4,000.00 | 4,000.00 | 4,000.00 | 4,000.00 | 4,000.00 | 4,000.00 | 4,000.00 | 4,000.00 | 4,000.00 | 4,000.00 | 4,000.00 | 4,000.00 | 48,000.00 | |
| 5015 - Holy Unions / Weddings | 50.00 | 50.00 | 50.00 | 50.00 | 50.00 | 50.00 | 50.00 | 50.00 | 50.00 | 50.00 | 50.00 | 50.00 | 50.00 | 50.00 | 50.00 | 50.00 | 50.00 | 600.00 | |
| 5030 - Sunburst Advertising | 500.00 | 500.00 | 500.00 | 500.00 | 500.00 | 500.00 | 500.00 | 500.00 | 500.00 | 500.00 | 500.00 | 500.00 | 500.00 | 500.00 | 500.00 | 500.00 | 500.00 | 6,000.00 | |
| 5040 - Samaritan Institute | | | | | | | | | | | | | | | | | | 0.00 | |
| 5110 - Simply Divine Books and Things | 0.00 | 0.00 | 0.00 | 0.00 | 0.00 | 0.00 | 0.00 | 0.00 | 0.00 | 0.00 | 0.00 | 0.00 | 0.00 | 0.00 | 0.00 | 0.00 | 0.00 | 0.00 | |
| 5115 - Fundraising | | | | | | | | | | | | | | | | | | 0.00 | |
| 5092 - Yard Sale | | | | | 1,500.00 | | | | | | | | | | | | | 3,000.00 | |
| 5881 - Kind of a Drag | 4,500.00 | | | | | | 4,500.00 | | | | | | | | | | | 9,000.00 | |
| 59XX - Christmas Ornaments | | | | | | | | | | 1,500.00 | | | | | | | | 1,500.00 | |
| 59XX - TBA Fundraiser | | | | | | | | | | | | | | | | | | 0.00 | |
| 5903 - Casino Night | | | | | | | | | | | | | | | | | | 0.00 | |
| 5905 - Thanksgiving Offering | | | | | | | | | | | | | | | | | | 0.00 | |
| Total 5115 - Fundraising | 4,500.00 | 0.00 | 0.00 | 0.00 | 1,500.00 | 0.00 | 4,500.00 | 0.00 | 4,000.00 | 1,500.00 | 15,000.00 | 3,800.00 | 15,000.00 | 3,800.00 | 15,000.00 | 3,800.00 | 34,800.00 | | |
| 5424 - Proceeds from Amazon.com | 0.00 | 0.00 | 0.00 | 0.00 | 0.00 | 0.00 | 0.00 | 0.00 | 0.00 | 0.00 | 0.00 | 0.00 | 0.00 | 0.00 | 0.00 | 0.00 | 0.00 | 0.00 | |
| Total 5000 - Eamed Income | 9,500.00 | 5,000.00 | 5,000.00 | 5,000.00 | 6,500.00 | 5,000.00 | 9,500.00 | 5,000.00 | 9,000.00 | 6,500.00 | 20,000.00 | 8,800.00 | 6,500.00 | 9,000.00 | 20,000.00 | 8,800.00 | 94,800.00 | | |
| 5800 - Special Events | | | | | | | | | | | | | | | | | | 0.00 | |
| 5810 - Easter Income | | | | | 5,000.00 | | | | | | | | | | | | | 5,000.00 | |
| 5813 - Concert Series 2014 | | | | | | | | | | | | | | | | | | 0.00 | |
| 5820 - Christmas Eve Income | | | | | | | | | | | | | | | | | | 0.00 | |
| Total 5800 - Special Events | 5,000.00 | 5,000.00 | 5,000.00 | 5,000.00 | 5,000.00 | 5,000.00 | 5,000.00 | 5,000.00 | 5,000.00 | 5,000.00 | 5,000.00 | 5,000.00 | 5,000.00 | 5,000.00 | 5,000.00 | 5,000.00 | 5,000.00 | 16,494.82 | |
| Total Income | 52,916.64 | 48,416.64 | 52,366.64 | 53,416.64 | 49,916.64 | 52,366.64 | 52,916.64 | 52,366.64 | 52,416.64 | 49,916.64 | 67,366.64 | 63,711.46 | 648,094.50 | | | | | | |
| Expense | | | | | | | | | | | | | | | | | | | |
| 6000 - Celebration | | | | | | | | | | | | | | | | | | 0.00 | |
| 6010 - Worship | | | | | | | | | | | | | | | | | | 0.00 | |
| 6011 - Service Supplies | 100.00 | 100.00 | 100.00 | 100.00 | 100.00 | 100.00 | 100.00 | 100.00 | 100.00 | 100.00 | 100.00 | 100.00 | 100.00 | 100.00 | 100.00 | 100.00 | 100.00 | 1,200.00 | |
| 6012 - Honoraria | 250.00 | 250.00 | 250.00 | 250.00 | 250.00 | 250.00 | 250.00 | 250.00 | 250.00 | 250.00 | 250.00 | 250.00 | 250.00 | 250.00 | 250.00 | 250.00 | 250.00 | 3,000.00 | |
| Total 6010 - Worship | 100.00 | 350.00 | 100.00 | 100.00 | 350.00 | 100.00 | 100.00 | 350.00 | 100.00 | 100.00 | 350.00 | 100.00 | 100.00 | 350.00 | 100.00 | 350.00 | 100.00 | 2,200.00 | |
| 6020 - Music and Arts | | | | | | | | | | | | | | | | | | 0.00 | |
| 6021 - Musicians | 5,300.00 | 5,300.00 | 5,300.00 | 5,300.00 | 5,300.00 | 5,300.00 | 5,300.00 | 5,300.00 | 5,300.00 | 5,300.00 | 5,300.00 | 5,300.00 | 5,300.00 | 5,300.00 | 5,300.00 | 5,300.00 | 5,300.00 | 63,600.00 | |
| 6022 - Music | 200.00 | 200.00 | 200.00 | 200.00 | 200.00 | 200.00 | 200.00 | 200.00 | 200.00 | 200.00 | 200.00 | 200.00 | 200.00 | 200.00 | 200.00 | 200.00 | 200.00 | 2,400.00 | |
| 6023 - Musical Instrument Maintenance | 264.39 | 264.39 | 264.39 | 264.39 | 264.39 | 264.39 | 264.39 | 264.39 | 264.39 | 264.39 | 264.39 | 264.39 | 264.39 | 264.39 | 264.39 | 264.39 | 264.39 | 3,172.62 | |
| 6025 - Licensing | | | | | | 274.00 | | | | | | | | | | | | 894.00 | |
| 6031 - Lessons and Scholarships | 250.00 | 250.00 | 250.00 | 250.00 | 250.00 | 250.00 | 250.00 | 250.00 | 250.00 | 250.00 | 250.00 | 250.00 | 250.00 | 250.00 | 250.00 | 250.00 | 250.00 | 3,003.96 | |
| 6032 - Conferences and Meetings | 125.00 | 125.00 | 125.00 | 125.00 | 125.00 | 125.00 | 125.00 | 125.00 | 125.00 | 125.00 | 125.00 | 125.00 | 125.00 | 125.00 | 125.00 | 125.00 | 125.00 | 1,500.00 | |

Sunshine Cathedral
2014 Ministry Plan

| | 4-s 5-p | 4-s 4-p | 5-s 4-p | 4-s 4-p | 4-s 5-p | 5-s 4-p | 4-s 4-p | 4-s 5-p | 5-s 4-p | 4-s 4-p | 4-s 5-p | 5-s 4-p | 4-s 4-p | 4-s 5-p | 5-s 4-p | 4-s 4-p | TOTAL |
|---|-----------|-----------|-----------|-----------|-----------|-----------|-----------|-----------|-----------|-----------|-----------|-----------|-----------|-----------|-----------|-----------|------------|
| | Jan | Feb | Mar | Apr | May | Jun | Jul | Aug | Sep | Oct | Nov | Dec | Jan - Dec | Jan - Dec | Jan - Dec | Jan - Dec | Jan - Dec |
| 6033 - Honorarium | 416.67 | 416.67 | 416.67 | 416.67 | 416.67 | 416.67 | 416.67 | 416.67 | 416.67 | 416.67 | 416.67 | 416.67 | 416.67 | 416.67 | 416.67 | 416.67 | 5,000.00 |
| Total 6020 - Music and Arts | 6,291.67 | 6,586.06 | 6,291.67 | 6,371.67 | 6,291.67 | 6,565.67 | 6,371.67 | 6,291.67 | 6,291.67 | 6,371.66 | 6,911.66 | 6,645.62 | 6,371.66 | 6,371.66 | 6,911.66 | 6,645.62 | 77,252.35 |
| Total 6000 - Celebration | 6,391.67 | 6,906.06 | 6,391.67 | 6,471.67 | 6,641.67 | 6,665.67 | 6,471.67 | 6,641.67 | 6,391.66 | 6,471.66 | 7,261.66 | 6,745.62 | 6,471.66 | 6,471.66 | 7,261.66 | 6,745.62 | 79,452.35 |
| 6500 - Congregational Life | | | | | | | | | | | | | | | | | |
| 6550 - Welcome Ministry | | | | | | | | | | | | | | | | | |
| 6551 - First time visitor gift | 0.00 | 0.00 | 0.00 | 0.00 | 0.00 | 0.00 | 0.00 | 0.00 | 0.00 | 0.00 | 0.00 | 0.00 | 0.00 | 0.00 | 0.00 | 0.00 | 0.00 |
| 6552 - Hospitality | 95.00 | 95.00 | 95.00 | 95.00 | 95.00 | 95.00 | 95.00 | 95.00 | 95.00 | 95.00 | 95.00 | 95.00 | 95.00 | 95.00 | 95.00 | 95.00 | 1,140.00 |
| Total 6550 - Welcome Ministry | 95.00 | 95.00 | 95.00 | 95.00 | 95.00 | 95.00 | 95.00 | 95.00 | 95.00 | 95.00 | 95.00 | 95.00 | 95.00 | 95.00 | 95.00 | 95.00 | 1,140.00 |
| 6580 - Volunteer Appreciation | | | | | | | | | | | | | | | | | |
| 6581 - Meetings and functions | 100.00 | 100.00 | 100.00 | 100.00 | 100.00 | 100.00 | 100.00 | 100.00 | 100.00 | 100.00 | 100.00 | 100.00 | 100.00 | 100.00 | 100.00 | 100.00 | 1,200.00 |
| Total 6580 - Volunteer Appreciation | 100.00 | 100.00 | 100.00 | 100.00 | 100.00 | 100.00 | 100.00 | 100.00 | 100.00 | 100.00 | 100.00 | 100.00 | 100.00 | 100.00 | 100.00 | 100.00 | 1,200.00 |
| 7070 - Global Outreach | | | | | | | | | | | | | | | | | |
| 7071 - Jamaica | 0.00 | 0.00 | 0.00 | 0.00 | 0.00 | 0.00 | 0.00 | 0.00 | 0.00 | 0.00 | 0.00 | 0.00 | 0.00 | 0.00 | 0.00 | 0.00 | 0.00 |
| 7072 - Miami | 0.00 | 0.00 | 0.00 | 0.00 | 0.00 | 0.00 | 0.00 | 0.00 | 0.00 | 0.00 | 0.00 | 0.00 | 0.00 | 0.00 | 0.00 | 0.00 | 0.00 |
| 7073 - Local Community | 450.00 | 450.00 | 450.00 | 450.00 | 450.00 | 450.00 | 450.00 | 450.00 | 1,000.00 | 500.00 | 450.00 | 450.00 | 450.00 | 500.00 | 450.00 | 550.00 | 6,150.00 |
| 7074 - Second Life | 550.00 | 550.00 | 550.00 | 550.00 | 550.00 | 550.00 | 550.00 | 550.00 | 550.00 | 550.00 | 550.00 | 550.00 | 550.00 | 550.00 | 550.00 | 550.00 | 6,600.00 |
| Total 7070 - Global Outreach | 1,000.00 | 1,000.00 | 1,000.00 | 1,000.00 | 1,000.00 | 1,000.00 | 1,000.00 | 1,000.00 | 1,550.00 | 1,100.00 | 1,000.00 | 1,000.00 | 1,100.00 | 1,000.00 | 1,100.00 | 1,100.00 | 12,750.00 |
| 7080 - Benevolence | | | | | | | | | | | | | | | | | |
| 7081 - Services Provided | 0.00 | 0.00 | 0.00 | 0.00 | 0.00 | 0.00 | 0.00 | 0.00 | 0.00 | 0.00 | 0.00 | 0.00 | 0.00 | 0.00 | 0.00 | 0.00 | 0.00 |
| Total 7080 - Benevolence | 0.00 | 0.00 | 0.00 | 0.00 | 0.00 | 0.00 | 0.00 | 0.00 | 0.00 | 0.00 | 0.00 | 0.00 | 0.00 | 0.00 | 0.00 | 0.00 | 0.00 |
| 7090 - Young Adult Outreach | | | | | | | | | | | | | | | | | |
| 7091 - Services Provided | 50.00 | 50.00 | 50.00 | 50.00 | 50.00 | 50.00 | 50.00 | 50.00 | 50.00 | 50.00 | 50.00 | 50.00 | 50.00 | 50.00 | 50.00 | 50.00 | 600.00 |
| Total 7090 - Young Adult Outreach | 50.00 | 50.00 | 50.00 | 50.00 | 50.00 | 50.00 | 50.00 | 50.00 | 50.00 | 50.00 | 50.00 | 50.00 | 50.00 | 50.00 | 50.00 | 50.00 | 600.00 |
| 7100 - SunCast | | | | | | | | | | | | | | | | | |
| 7101 - Supplies | 35.00 | 35.00 | 35.00 | 35.00 | 35.00 | 35.00 | 35.00 | 35.00 | 35.00 | 35.00 | 35.00 | 35.00 | 35.00 | 35.00 | 35.00 | 35.00 | 420.00 |
| 7102 - Equipment maintenance | 780.00 | 780.00 | 780.00 | 780.00 | 780.00 | 780.00 | 780.00 | 780.00 | 780.00 | 780.00 | 780.00 | 780.00 | 780.00 | 780.00 | 780.00 | 780.00 | 9,360.00 |
| Total 7100 - SunCast | 815.00 | 815.00 | 815.00 | 815.00 | 815.00 | 815.00 | 815.00 | 815.00 | 815.00 | 815.00 | 815.00 | 815.00 | 815.00 | 815.00 | 815.00 | 815.00 | 9,780.00 |
| 7200 - Salaries & related expenses | | | | | | | | | | | | | | | | | |
| 7201 - Salaries | 2,019.23 | 2,019.23 | 2,019.23 | 2,019.23 | 2,019.23 | 2,019.23 | 2,019.23 | 2,019.23 | 2,019.23 | 2,019.23 | 2,019.23 | 2,019.23 | 2,019.23 | 2,019.23 | 2,019.23 | 2,019.23 | 20,999.96 |
| 7240 - Employee Benefits | 5,000.00 | 5,000.00 | 5,000.00 | 5,000.00 | 5,000.00 | 5,000.00 | 5,000.00 | 5,000.00 | 5,000.00 | 5,000.00 | 5,000.00 | 5,000.00 | 5,000.00 | 5,000.00 | 5,000.00 | 5,000.00 | 60,000.00 |
| 7250 - Payroll taxes | 1,379.76 | 1,103.81 | 1,103.81 | 1,103.81 | 1,379.76 | 1,103.81 | 1,103.81 | 1,379.76 | 1,103.81 | 1,379.76 | 1,103.81 | 1,103.81 | 1,379.76 | 1,103.81 | 1,103.81 | 1,103.81 | 14,349.52 |
| 7260 - Automobile | | | | | | | | | | | | | | | | | |
| 7261 - Allowance | 2,019.23 | 1,615.38 | 1,615.38 | 1,615.38 | 2,019.23 | 1,615.38 | 1,615.38 | 2,019.23 | 1,615.38 | 2,019.23 | 1,615.38 | 1,615.38 | 2,019.23 | 1,615.38 | 1,615.38 | 1,615.38 | 20,999.96 |
| Total 7260 - Automobile | 2,019.23 | 1,615.38 | 1,615.38 | 1,615.38 | 2,019.23 | 1,615.38 | 1,615.38 | 2,019.23 | 1,615.38 | 2,019.23 | 1,615.38 | 1,615.38 | 2,019.23 | 1,615.38 | 1,615.38 | 1,615.38 | 20,999.96 |
| 7510 - Insurance | 34,723.18 | 28,778.55 | 28,778.55 | 34,723.18 | 28,778.55 | 28,778.55 | 28,778.55 | 34,723.18 | 28,778.55 | 34,723.18 | 28,778.55 | 28,778.55 | 34,723.18 | 28,778.55 | 28,778.55 | 28,778.55 | 369,721.10 |
| Total 7200 - Salaries & related expenses | 34,723.18 | 28,778.55 | 28,778.55 | 34,723.18 | 28,778.55 | 28,778.55 | 28,778.55 | 34,723.18 | 28,778.55 | 34,723.18 | 28,778.55 | 28,778.55 | 34,723.18 | 28,778.55 | 28,778.55 | 28,778.55 | 369,721.10 |
| 8100 - Non-personnel expenses | | | | | | | | | | | | | | | | | |
| 8105 - Advertising | 416.67 | 416.67 | 416.67 | 416.67 | 416.67 | 416.67 | 416.67 | 416.67 | 416.67 | 416.67 | 416.67 | 416.67 | 416.67 | 416.67 | 416.67 | 416.67 | 5,000.00 |
| 8130 - Telephone & Telecommunications | | | | | | | | | | | | | | | | | |
| 8131 - Telephone - Office | 600.00 | 600.00 | 600.00 | 600.00 | 600.00 | 600.00 | 600.00 | 600.00 | 600.00 | 600.00 | 600.00 | 600.00 | 600.00 | 600.00 | 600.00 | 600.00 | 7,200.00 |
| 8132 - Telephone - Cellular | 0.00 | 0.00 | 0.00 | 0.00 | 0.00 | 0.00 | 0.00 | 0.00 | 0.00 | 0.00 | 0.00 | 0.00 | 0.00 | 0.00 | 0.00 | 0.00 | 0.00 |
| 8133 - Internet | 250.00 | 250.00 | 250.00 | 250.00 | 250.00 | 250.00 | 250.00 | 250.00 | 250.00 | 250.00 | 250.00 | 250.00 | 250.00 | 250.00 | 250.00 | 250.00 | 3,000.00 |
| Total 8130 - Telephone & telecommunications | 850.00 | 850.00 | 850.00 | 850.00 | 850.00 | 850.00 | 850.00 | 850.00 | 850.00 | 850.00 | 850.00 | 850.00 | 850.00 | 850.00 | 850.00 | 850.00 | 10,200.00 |
| 8140 - Postage, shipping, delivery | 200.00 | 200.00 | 200.00 | 200.00 | 200.00 | 200.00 | 200.00 | 200.00 | 200.00 | 200.00 | 200.00 | 200.00 | 200.00 | 200.00 | 200.00 | 200.00 | 2,400.00 |
| 8160 - Equip rental & maintenance | 0.00 | 0.00 | 500.00 | 0.00 | 0.00 | 500.00 | 0.00 | 0.00 | 0.00 | 500.00 | 0.00 | 0.00 | 0.00 | 500.00 | 0.00 | 500.00 | 2,000.00 |
| 8170 - Printing & copying | 1,000.00 | 1,000.00 | 1,000.00 | 1,000.00 | 1,000.00 | 1,000.00 | 1,000.00 | 1,000.00 | 1,000.00 | 1,000.00 | 1,000.00 | 1,000.00 | 1,000.00 | 1,000.00 | 1,000.00 | 1,000.00 | 12,000.00 |
| 8180 - Books, subscriptions, reference | 25.00 | 25.00 | 25.00 | 25.00 | 25.00 | 25.00 | 25.00 | 25.00 | 25.00 | 25.00 | 25.00 | 25.00 | 25.00 | 25.00 | 25.00 | 25.00 | 624.00 |
| Total 8100 - Non-personnel expenses | 2,491.67 | 2,491.67 | 2,491.67 | 2,491.67 | 2,491.67 | 2,491.67 | 2,491.67 | 2,491.67 | 2,491.67 | 2,491.67 | 2,491.67 | 2,491.67 | 2,491.67 | 2,491.67 | 2,491.67 | 2,491.67 | 32,224.00 |

**Sunshine Cathedral
2014 Ministry Plan**

| | 4-s-5-p | 4-s-4-p | 5-s-4-p | 4-s-4-p | 4-s-5-p | 5-s-4-p | 4-s-4-p | 5-s-5-p | 4-s-4-p | 4-s-4-p | 4-s-5-p | 5-s-4-p | 4-s-4-p | 4-s-4-p | 5-s-4-p | 4-s-4-p | TOTAL |
|---|-----------|-----------|-----------|-----------|-----------|-----------|-----------|-----------|-----------|-----------|-----------|-----------|-----------|-----------|-----------|-----------|------------|
| | Jan | Feb | Mar | Apr | May | Jun | Jul | Aug | Sep | Oct | Nov | Dec | Jan - Dec | | | | |
| 8200 - Facilities | | | | | | | | | | | | | | | | | |
| 8205 - Lease | 2,650.00 | 2,120.00 | 2,120.00 | 2,120.00 | 2,650.00 | 2,120.00 | 2,120.00 | 2,650.00 | 2,120.00 | 2,120.00 | 2,650.00 | 2,120.00 | 2,120.00 | 2,120.00 | 2,120.00 | 2,120.00 | 27,560.00 |
| 8220 - Utilities | | | | | | | | | | | | | | | | | |
| 8221 - Electricity | 3,000.00 | 3,000.00 | 3,000.00 | 3,000.00 | 3,000.00 | 3,000.00 | 3,000.00 | 3,000.00 | 3,000.00 | 3,000.00 | 3,000.00 | 3,000.00 | 3,000.00 | 3,000.00 | 3,000.00 | 3,000.00 | 36,000.00 |
| 8332 - Water | 350.00 | 350.00 | 350.00 | 350.00 | 350.00 | 350.00 | 350.00 | 350.00 | 350.00 | 350.00 | 350.00 | 350.00 | 350.00 | 350.00 | 350.00 | 350.00 | 4,200.00 |
| Total 8220 - Utilities | 3,350.00 | 3,350.00 | 3,350.00 | 3,350.00 | 3,350.00 | 3,350.00 | 3,350.00 | 3,350.00 | 3,350.00 | 3,350.00 | 3,350.00 | 3,350.00 | 3,350.00 | 3,350.00 | 3,350.00 | 3,350.00 | 40,200.00 |
| 8240 - Repair and Maintenance | | | | | | | | | | | | | | | | | |
| 8241 - Lawn Service | 50.00 | 50.00 | 50.00 | 50.00 | 50.00 | 50.00 | 50.00 | 50.00 | 50.00 | 50.00 | 50.00 | 50.00 | 50.00 | 50.00 | 50.00 | 50.00 | 600.00 |
| 8242 - Pest Control | 166.00 | 166.00 | 166.00 | 166.00 | 166.00 | 166.00 | 166.00 | 166.00 | 166.00 | 166.00 | 166.00 | 166.00 | 166.00 | 166.00 | 166.00 | 166.00 | 1,992.00 |
| 8243 - Air Conditioning | 300.00 | 300.00 | 300.00 | 300.00 | 300.00 | 300.00 | 300.00 | 300.00 | 300.00 | 300.00 | 300.00 | 300.00 | 300.00 | 300.00 | 300.00 | 300.00 | 3,600.00 |
| 8244 - Trash removal | 360.00 | 360.00 | 360.00 | 360.00 | 360.00 | 360.00 | 360.00 | 360.00 | 360.00 | 360.00 | 360.00 | 360.00 | 360.00 | 360.00 | 360.00 | 360.00 | 4,320.00 |
| 8247 - Janitorial Supplies | 200.00 | 200.00 | 200.00 | 200.00 | 200.00 | 200.00 | 200.00 | 200.00 | 200.00 | 200.00 | 200.00 | 200.00 | 200.00 | 200.00 | 200.00 | 200.00 | 2,400.00 |
| 8248 - Supplies | 50.00 | 50.00 | 50.00 | 50.00 | 50.00 | 50.00 | 50.00 | 50.00 | 50.00 | 50.00 | 50.00 | 50.00 | 50.00 | 50.00 | 50.00 | 50.00 | 600.00 |
| 8249 - Day Care Repair and Maintenance | 700.00 | 700.00 | 700.00 | 700.00 | 700.00 | 700.00 | 700.00 | 700.00 | 700.00 | 700.00 | 700.00 | 700.00 | 700.00 | 700.00 | 700.00 | 700.00 | 8,400.00 |
| 8255 - Fire Prevention | 90.00 | 90.00 | 90.00 | 90.00 | 90.00 | 90.00 | 90.00 | 90.00 | 90.00 | 90.00 | 90.00 | 90.00 | 90.00 | 90.00 | 90.00 | 90.00 | 770.00 |
| 8258 - Renovation | 0.00 | 0.00 | 0.00 | 0.00 | 0.00 | 0.00 | 0.00 | 0.00 | 0.00 | 0.00 | 0.00 | 0.00 | 0.00 | 0.00 | 0.00 | 0.00 | 0.00 |
| 8259 - Lift Repair and Maintenance | 0.00 | 0.00 | 0.00 | 0.00 | 0.00 | 0.00 | 0.00 | 0.00 | 0.00 | 0.00 | 0.00 | 0.00 | 0.00 | 0.00 | 0.00 | 0.00 | 0.00 |
| Total 8240 - Repair and Maintenance | 1,826.00 | 1,566.00 | 1,826.00 | 1,526.00 | 1,776.00 | 1,476.00 | 1,916.00 | 1,476.00 | 2,276.00 | 1,616.00 | 1,476.00 | 1,476.00 | 1,826.00 | 1,826.00 | 1,476.00 | 1,826.00 | 20,582.00 |
| Total 8200 - Facilities | 7,826.00 | 7,036.00 | 7,296.00 | 6,996.00 | 7,776.00 | 6,946.00 | 7,386.00 | 7,476.00 | 7,746.00 | 7,616.00 | 6,946.00 | 7,296.00 | 7,296.00 | 7,296.00 | 7,296.00 | 7,296.00 | 88,342.00 |
| 8300 - Travel & meetings expenses | | | | | | | | | | | | | | | | | |
| 8310 - Travel | 500.00 | 500.00 | 500.00 | 500.00 | 500.00 | 500.00 | 500.00 | 500.00 | 500.00 | 500.00 | 500.00 | 500.00 | 500.00 | 500.00 | 500.00 | 500.00 | 4,547.57 |
| 8320 - Conference, convention, meeting | 200.00 | 200.00 | 200.00 | 200.00 | 200.00 | 200.00 | 200.00 | 200.00 | 200.00 | 200.00 | 200.00 | 200.00 | 200.00 | 200.00 | 200.00 | 200.00 | 1,600.00 |
| 8330 - Hospitality | 150.00 | 150.00 | 150.00 | 150.00 | 150.00 | 150.00 | 150.00 | 150.00 | 150.00 | 150.00 | 150.00 | 150.00 | 150.00 | 150.00 | 150.00 | 150.00 | 1,800.00 |
| Total 8300 - Travel & meetings expenses | 850.00 | 850.00 | 850.00 | 850.00 | 850.00 | 850.00 | 850.00 | 850.00 | 850.00 | 850.00 | 850.00 | 850.00 | 850.00 | 850.00 | 850.00 | 850.00 | 7,947.57 |
| 8600 - Business expenses | | | | | | | | | | | | | | | | | |
| 8605 - Legal and Banking Fees | 650.00 | 650.00 | 650.00 | 650.00 | 650.00 | 650.00 | 650.00 | 650.00 | 650.00 | 650.00 | 650.00 | 650.00 | 650.00 | 650.00 | 650.00 | 650.00 | 7,800.00 |
| 8670 - Organizational (corp) expenses | | | | | | | | | | | | | | | | | |
| 8671 - Returned Items | 0.00 | 0.00 | 0.00 | 0.00 | 0.00 | 0.00 | 0.00 | 0.00 | 0.00 | 0.00 | 0.00 | 0.00 | 0.00 | 0.00 | 0.00 | 0.00 | 70.00 |
| Total 8600 - Business expenses | 650.00 | 650.00 | 650.00 | 650.00 | 650.00 | 650.00 | 650.00 | 650.00 | 650.00 | 650.00 | 650.00 | 650.00 | 650.00 | 650.00 | 650.00 | 650.00 | 7,870.00 |
| 8750 - Simply Divine Books and Things | | | | | | | | | | | | | | | | | |
| 8751 - Purchases | 0.00 | 0.00 | 0.00 | 0.00 | 0.00 | 0.00 | 0.00 | 0.00 | 0.00 | 0.00 | 0.00 | 0.00 | 0.00 | 0.00 | 0.00 | 0.00 | 0.00 |
| Total 8750 - Simply Divine Books and Things | 0.00 | 0.00 | 0.00 | 0.00 | 0.00 | 0.00 | 0.00 | 0.00 | 0.00 | 0.00 | 0.00 | 0.00 | 0.00 | 0.00 | 0.00 | 0.00 | 0.00 |
| 8800 - Cooperation | | | | | | | | | | | | | | | | | |
| 8801 - MCC Jan-Sep 6.5% Oct-Dec 8% | 2,789.58 | 2,789.58 | 3,046.33 | 2,789.58 | 2,789.58 | 3,046.33 | 2,789.58 | 3,046.33 | 2,789.58 | 3,433.33 | 3,749.33 | 3,433.33 | 3,433.33 | 3,433.33 | 3,433.33 | 3,433.33 | 36,492.48 |
| 8804 - Clergy Fees | | | | | | | | | | | | | | | | | |
| Total 8800 - Cooperation | 2,789.58 | 2,789.58 | 3,046.33 | 2,789.58 | 2,789.58 | 3,046.33 | 2,789.58 | 3,046.33 | 2,789.58 | 4,008.33 | 3,749.33 | 3,433.33 | 3,433.33 | 3,433.33 | 3,433.33 | 3,433.33 | 575.00 |
| Total Expense | 57,782.11 | 51,561.86 | 51,364.22 | 51,157.47 | 57,982.11 | 51,288.22 | 51,801.47 | 58,538.86 | 52,107.46 | 58,970.85 | 52,787.21 | 52,752.70 | 52,752.70 | 52,752.70 | 52,752.70 | 52,752.70 | 648,094.50 |
| Net Ordinary Income | -4,865.47 | -3,145.22 | 1,002.42 | 2,259.17 | -8,065.47 | 1,078.42 | 1,115.17 | -6,172.22 | 309.18 | -9,054.21 | 14,579.43 | 10,958.76 | 10,958.76 | 10,958.76 | 10,958.76 | 10,958.76 | 0.00 |
| Net Income | -4,865.47 | -3,145.22 | 1,002.42 | 2,259.17 | -8,065.47 | 1,078.42 | 1,115.17 | -6,172.22 | 309.18 | -9,054.21 | 14,579.43 | 10,958.76 | 10,958.76 | 10,958.76 | 10,958.76 | 10,958.76 | 0.00 |



A Progressive, Positive, Practical Church

1480 SW Ninth Ave.,
Fort Lauderdale, FL 33315

Please join us each Sunday
as we gather for worship at

9:00 AM and 10:30 AM

9:00 AM Sunday services are ASL interpreted.
10:30 AM services are translated in Spanish

Sundays 5:00PM
in *Second Life*

Monthly Services in Jamaica.

Visit www.SunshineCathedral.org to watch sermons, view PDF version of various publications, submit prayer requests, make donations, or watch our "Sharing the Light" webcast.

Rev. Durrell Watkins, M.A., M.Div., D.Min. Senior Pastor of Sunshine Cathedral

